

Southwestern Pennsylvania  
Organization of  
**NURSE LEADERS**



# Celebrating 40 Years of Excellence in Nursing Leadership

## Final Program



2019 Annual Conference  
Nemacolin Woodlands Resort  
August 29-30, 2019

stryker

# We are proud to be a Sponsor of SWPONL

We know how hard you work to improve healthcare each and every day, and we are proud to be your trusted partner on this journey.



Stryker Corporation or its divisions or other corporate affiliated entities own, use or have applied for the following trademarks or service marks: Stryker. All other trademarks are trademarks of their respective owners or holders.

# Celebrating 40 Years of Excellence in Nursing Leadership



2019 Annual Conference | Nemaocolin Woodlands Resort | August 29-30, 2019

Southwestern Pennsylvania  
Organization of  
**NURSE LEADERS**  
SWPONL



Dear Colleagues:

Welcome to the 40<sup>th</sup> Annual Southwestern Pennsylvania Organization of Nurse Leaders Education Conference! The theme of our conference this year is “Celebrating 40 Years of Excellence in Nursing Leadership”.

The ever-changing landscape of healthcare effects nursing leaders as they manage complex environments. While most change can be positive, it can also be challenging. With that in mind, the SWPONL Education and Membership Committees have created an outstanding agenda designed to support your leadership, to elevate your passion for nursing excellence, quality, and to educate you in new safety practices. During the conference, there will be many opportunities to learn about how well nurse leaders thrive in challenging times, and how resilience and passion truly compliment the healthcare industry, thanks to all of you.

We are excited to present a variety of topics! From optimizing personal leadership, knowledge and passion; flourishing in times of change; patient safety and quality; to much more, you can engage in discussion with an amazing panel of expert nurse leaders who will share their best practices and learned experiences applicable to successful nursing leadership.

In addition to the conference speakers, you will not want to miss the opportunity to browse the collection of poster presentations and an impressive exhibit hall. These are always the highlights of the conference! The sponsors and exhibitors are generous in their support of this conference and we are eternally grateful. Please take some time to thank them for their support and interact with them throughout the conference.

The networking event continues to be one of the highlights of the conference, where you can connect with other nurse leaders in the region. Part of building the foundation for expert nursing leadership and resiliency is bonding with others – and this is a fantastic opportunity to connect.

Thank you for attending!

Sincerely,

**Jacqueline Collavo, MA, BSN, RN, NE-BC**  
Chair, SWPONL

### **SWPONL Mission**

To support the professional development of nurse leaders through collaboration, advocacy and education.

### **SWPONL Vision**

To position nurse leaders to influence the future of healthcare in Southwestern Pennsylvania.



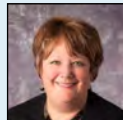
## In Recognition and Appreciation of the 2019 SWPONL Conference Planning Committee

### Chair, Education Committee

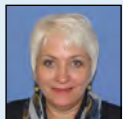


*Deborah Vehec, MSN, RN*  
Manager of Special Programs  
Vitalant

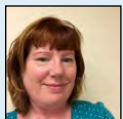
*Denise Abernethy, MSN, RN, CEN*  
Clinical Director  
UPMC St. Margaret



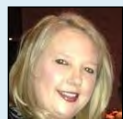
*Diane Cancilla, MSN, RN, NEA-BC*  
Unit Director Radiology  
UPMC Children's Hospital of Pittsburgh



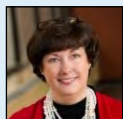
*Regina Davin, RN, MSN*  
Associate Nurse Executive  
Washington Health System



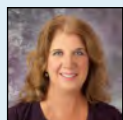
*Louise Dobbins, BSN, MHA, FACHE*  
Director, Hospital Operations  
AHN Allegheny General Hospital



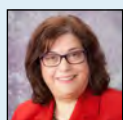
*Jacqueline Drahos, MSN, RN*  
Unit Director  
UPMC Jameson



*Laura Fennimore, DNP, RN, NEA-BC*  
Professor  
University of Pittsburgh



*Lauren Gorman, MSN, RN*  
Unit Director Adult ICU  
Magee Women's Hospital of UPMC

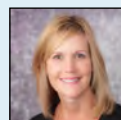


*Lisa A. Manni, MSN, RN, NEA-BC*  
Director of Nursing  
UPMC Passavant

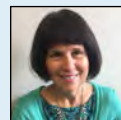
### Chair, Membership Committee



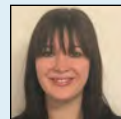
*Michele Carlson, MSN, RN, CPN, NEA-BC*  
Director, Acute Clinical Services  
UPMC Children's Hospital of Pittsburgh



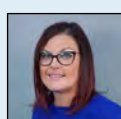
*Robin Myers, MSN, CRNP*  
Advanced Clinical Education Specialist  
UPMC Mercy



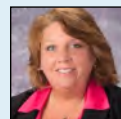
*Michele Prior, MSN, RN*  
Advanced Practice Nurse  
AHN Allegheny General Hospital



*Ashley Singh, DNP, MSN, RN*  
Faculty, Critical Care  
Chatham University



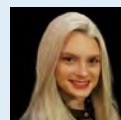
*Aimee L. Skrtich, DNP, RN, CCRN, NE-BC*  
Clinical Program Director  
ICU Service Center, UPMC



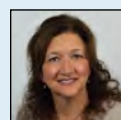
*Shelley Watters, DNP, RN, NE-BC*  
Director, Cultural Excellence  
UPMC Presbyterian Shadyside



*Robin Weaver, PhD, RN, CNE*  
Coordinator RN-BSN Program  
California University of Pennsylvania



*Rebecca Weiss, MSN, RN-BC, CCRN-K*  
Programmatic Nurse Specialist  
UPMC Shadyside



*Linda R. Mason*  
Conference Project Manager  
SWPONL



## Conference Program Wednesday, August 28, 2019

**3:00PM - 8:00PM** Early Registration, Preview Basket Raffle, and Photos

## Thursday, August 29, 2019

**7:00AM – 8:30AM** Registration, Continental Breakfast, Visit Exhibitors, Posters, and Raffle

**8:30AM – 8:45AM** Welcome, Opening Remarks / SWPONL Chair Welcome

*Deb Vehec, MSN, RN*  
Manager of Special Programs  
Bone Marrow Donor Coordinator  
Vitalant  
Pittsburgh, Pennsylvania



*Jacqueline Collavo, MA, BSN, RN, NE-BC*  
SWPONL Chair  
Chief Nursing Officer  
AHN West Penn Hospital  
Pittsburgh, Pennsylvania



**8:45AM – 10:15AM** Opening Keynote: Passionate Leadership – Soaring to New Heights

*Donna Cardillo, RN, MA, CSP, FAAN*  
The Inspiration Nurse  
Author: *Falling Together-How to Find Balance, Joy, and Meaningful Change When Your Life Seems to be Falling Apart*  
Sea Girt, New Jersey



*Following the presentation by Donna Cardillo, she will facilitate a roundtable discussion amongst all the attendees to delve into the topic more and to share specific program examples to learn from each other.*

**10:15AM - 10:45AM** Refreshment Break, Visit Exhibits, Posters, and Raffle

Poster Authors (even numbered posters) will be available at their posters for discussion, questions, and answers.

**10:45AM - 11:45AM** Leadership Resilience - Why Self Care is a Core Leadership Competency

*Brenda Nevidjon, MSN, RN, FAAN*  
Chief Executive Officer  
Oncology Nursing Society  
Pittsburgh, Pennsylvania





## Thursday, August 29, 2019 (continued)

**11:45AM – 12:45PM Anniversary Luncheon and Networking**

**12:45PM – 1:30PM Activating Change: Using Motivational Interviewing and Coaching in Nurse Leadership**

*Amanda Gabarda, EdD, MPH, NBC-HWC*  
Director, Clinical Training and Development  
UPMC Health Plan  
Pittsburgh, Pennsylvania



**1:30PM – 2:00PM Dessert Break, Visit Exhibits, Posters and Raffle**

Poster Authors (odd numbered posters) will be available at their posters for discussion, questions, and answers.

**2:00PM – 3:00PM The Lessons Learned from the “Patient Safety” Black Box**

*Holly M. Hampe, D.Sc., RN, MHA, MRM*  
Program Director  
Assistant Professor  
Health Service Administration  
Robert Morris University  
Pittsburgh, Pennsylvania



**3:00PM – 6:30PM Free Time to Enjoy the Resort**

SWPONL attendees receive a 10% special discount on resort activities. Please make your reservations in advance to take advantage of this offer.

**6:30PM – 8:00PM Anniversary Celebration and Networking Reception**

Enjoy the evening with friends and colleagues featuring a new addition of a photo booth and photographer to help capture new memories. The reception is an ideal time to network and to celebrate this milestone anniversary year. This special event is included in the registration and all are welcome!

### 2019 Conference Objectives

- Explore passionate leadership – developing solutions for leaders to soar to new heights
- Examine motivational interviewing techniques for use with patients, customers, and staff in facilitating change and effective coaching
- Exploring the past 40 years of nursing and implementing said knowledge towards the future of the profession
- Identifying resilient leadership skills that optimize personal and team performances

# Celebrating 40 Years of Excellence in Nursing Leadership



2019 Annual Conference | Nemaquin Woodlands Resort | August 29-30, 2019

Southwestern Pennsylvania  
Organization of  
**NURSE LEADERS**  
swponl

## Friday, August 30, 2019

**7:15AM – 8:30AM** Registration, Continental Breakfast, Visit Exhibitors, Posters, and Raffle

**8:30AM – 9:00AM** **SWPONL Updates, Recognitions and Passing of the Gavel**

*Jacqueline Collavo, MA, BSN, RN, NE-BC*

SWPONL Chair

Chief Nursing Officer

AHN West Penn Hospital

Pittsburgh, Pennsylvania



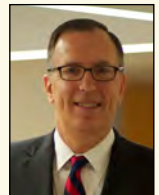
**9:00AM – 10:00AM** **Keynote: Preparing for the Future - Prospering With Inclusive Workplaces**

*John Lasky*

Vice President and Chief Human Resources Officer

Temple University Health System

Philadelphia, Pennsylvania



**10:00AM - 10:30AM** **Refreshment Break, Visit Exhibits, Posters and Raffle**

Raffle closes at 10:30AM – last chance to buy tickets!

*Program Continues on Next Page*

## Contact Hours

The Southwestern Pennsylvania Organization of Nurse Leaders and the University of Pittsburgh School of Nursing are jointly providing this educational activity. Nurses participating in the conference and completing the evaluation tool may be awarded a maximum of 8 continuing education contact hours. The University of Pittsburgh School of Nursing is accredited as a provider of continuing nursing education by the American Nurses Credentialing Center's Commission on Accreditation.

The evaluation link will be sent via email after the conclusion of the conference (through Survey Monkey). **In order to receive your Continuing Education Credits for this conference you must complete the survey by Wednesday, September 4<sup>th</sup>.** If you have any questions, please contact Linda Mason at [swponlhq@gmail.com](mailto:swponlhq@gmail.com).

**The contact hour certificate will be sent directly to attendees from the University of Pittsburgh a few weeks after the Conference..**



**10:30AM - 11:45AM Expert Panel: How Leadership Development for Nurse Leaders Has Changed and What is Essential for Nurse Leaders for the Future**

**Moderator:**

*Laura Fennimore, DNP, RN, NEA-BC*  
Professor  
University of Pittsburgh  
Pittsburgh, Pennsylvania



**Panel:**

*Helen Burns, PhD, RN, NEA-BC, FAAN*  
Senior Vice President/Chief Nursing Officer  
Excela Health  
Pittsburgh, Pennsylvania



*Mary Ellen Glasgow, PhD, RN, ANEF, FAAN*  
Dean and Professor  
School of Nursing  
Duquesne University  
Pittsburgh, Pennsylvania



*Maribeth McLaughlin RN, BSN, MPM*  
Interim CNO, VP, Patient Care Services, UPMC Magee-Women's Hospital  
VP of Operations, UPMC Magee-Women's Hospital  
VP Women's Health Services, UPMC  
Pittsburgh, Pennsylvania



*Gail A. Wolf, RN, PhD, FAAN*  
Professor (retired)  
University of Pittsburgh  
Pittsburgh, Pennsylvania



*Claire Zangerle, DNP, MSN, MBA, RN, FAONL, NEA-BC*  
Past Chair, SWPONL  
Chief Nurse Executive  
Allegheny Health Network  
Pittsburgh, Pennsylvania



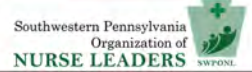
***Program Continues on Next Page***



# Celebrating 40 Years of Excellence in Nursing Leadership



2019 Annual Conference | Nemaquin Woodlands Resort | August 29-30, 2019



## 11:45AM - 12:15PM Closing Keynote - Nursing Leadership in Nursing Practice: Your Influence Matters

*Claire Zangerle, DNP, MSN, MBA, RN, FAONL, NEA-BC*  
Past Chair, SWPONL  
Chief Nurse Executive  
Allegheny Health Network  
Pittsburgh, Pennsylvania



12:15PM – 12:45PM Announcement of Poster Winners, Gift Baskets, and Giveaways

12:45PM – 1:00PM Conference Adjournment



## THE DIFFERENCE OF TOTAL VASCULAR ACCESS MANAGEMENT

A FULLY INTEGRATED PROGRAM THAT DELIVERS END-TO-END CARE. At BD, we believe that truly effective vascular access therapy starts long before the first IV is ever inserted. That's why we designed the BD<sup>®</sup> Vascular Access Management program: an integrated solution that spans the continuum of vascular access care. The program aims to help clinicians reduce complications and improve quality of care by standardizing on industry best practices throughout the entire process. With the combined expertise of BD and BARD—now as one BD—our program offers in-depth assessments, evidence-based recommendations, training and education, and world-class tools and technologies. Discover total vascular access management designed to deliver better clinical and economic outcomes. Discover the new BD.

Learn more at [bd.com/TotalManagement](http://bd.com/TotalManagement)

BD and the BD Logo are trademarks of Becton, Dickinson and Company or its affiliates. © 2019 BD. All rights reserved. BD-9535 (07/19)

**BARD**  
has joined BD





## Posters

### EDUCATION and INNOVATION

**1**

**Emergency Department and Express Care Partnership - Bringing the Right Care to the Patient, At the Right Time, In the Right Place**

Heather Ambrose<sup>1</sup>, David Rausch<sup>2</sup>, Jennifer Woodring<sup>3</sup>

<sup>1</sup>UPMC Presbyterian Shadyside, Pittsburgh, PA, <sup>2</sup>Children's Express Care, Pittsburgh, PA, <sup>3</sup>UPMC Children's Hospital of Pittsburgh, Pittsburgh, PA

**2**

**Pediatric Education Series Webinars: Targeting Pediatric Nursing Education with a Collaborative Approach**

Sheila Hahner, Danielle Harold, Heather Anderson, Christine Divens, Anne Marie Kuchera

UPMC Children's Hospital of Pittsburgh, Pittsburgh, PA

**3**

**Just a Text Away: Remote Monitoring Postpartum Hypertension**

Beth Quinn, Maribeth McLaughlin

UPMC Magee-Womens Hospital, Pittsburgh, PA

**4**

**Nurse-Driven Delirium Protocol**

Erin Flanagan<sup>1</sup>, Stasa Tadic<sup>1</sup>, Jusjit Lalli<sup>1</sup>, Christine Bridge<sup>2</sup>, Andrew Bilderback<sup>2</sup>

<sup>1</sup>UPMC Mercy, Pittsburgh, PA, <sup>2</sup>Wolff Center, Pittsburgh, PA

**5**

**Using a Poverty Simulation as an Innovative Learning Tool to Improve Understanding of Poverty and Attitudes Towards Poverty in Care Managers and Health Coaches**

Amanda Gabarda<sup>1</sup>, Laura Fennimore<sup>2</sup>

<sup>1</sup>UPMC Health Plan, Pittsburgh, PA, <sup>2</sup>University of Pittsburgh, Pittsburgh, PA

**6**

**Improving New Graduate Nurse Recruitment and Retention through a Medical-Surgical Rotation Program**

Catherine Green

UPMC St. Margaret, Pittsburgh, PA

**8**

**Intimate Partner Violence Program for Nurses**

Karen Stein<sup>1</sup>, Melanie Turk<sup>2</sup>

<sup>1</sup>UPMC Magee-Womens Hospital, Pittsburgh, PA, <sup>2</sup>Duquesne University, Pittsburgh, PA

**9**

**Simulation Education to Decrease Medication Errors in a Pediatric Critical Care Setting**

Todd Spencer, Emily Shawley

UPMC Children's Hospital of Pittsburgh, Pittsburgh, PA

**10**

**Can You Escape a Disaster? The Gamification of MCI Training**

Mary Wood, Denise Abernethy

UPMC St Margaret, Pittsburgh, PA

**11**

**Improving Door-To-CT Times of Stroke Patients with the Use of Emergency Nurse Protocol Order Sets**

Laura Barczykowski

UPMC St. Margaret, Pittsburgh, PA

**12**

**Innovations in Screening for Suicide in the Emergency Room: Going One Step Further**

Peggy Furman, Kathe Dvorsak

St. Clair Hospital, Pittsburgh, PA

**13**

**Education Navigator: Innovation in Nurse Retention**

Kristine Szarejko, Deborah Lewis

Excelsa Health, Greensburg, PA

**14**

**More Than Just Numbers: Improving HCAHP Scores through Better Understanding and Communication**

Erin Jay, Heather Ambrose, Courtney Varadi

UPMC Presbyterian Shadyside, Pittsburgh, PA

**15**

**Purposeful Design: A Team Approach for Patient Care and Education**

Meredith Aumer, Zachary Allan, Patricia Jess

Jefferson Hospital, Allegheny Health Network, Pittsburgh, PA

**16**

**General Inpatient Hospice (GIP): An End of Life Option for Hospitalized Patients and their Families**

Lauren Leigh Gorman, Lucy Ludwikowski

UPMC Magee-Womens Hospital, Pittsburgh, PA

**17**

**Next Level Champions: Creating an Expert RN Team for DCD Donors**

Kate Spiering<sup>1</sup>, Amy Weisgerber<sup>2</sup>

<sup>1</sup>UPMC Presbyterian, Pittsburgh, PA, <sup>2</sup>CORE, Pittsburgh, PA

### NURSING LEADERSHIP

**19**

**Using the Patient Centered Value System to Connect Feedback with Action**

Jessica Carlson

UPMC Innovation Center, Pittsburgh, PA

# Celebrating 40 Years of Excellence in Nursing Leadership



2019 Annual Conference | Nemaquin Woodlands Resort | August 29-30, 2019

Southwestern Pennsylvania  
Organization of  
**NURSE LEADERS**  
SWPNL

**20**

## **In Acute Care Nursing, Do Retention Strategies Help Decrease Nursing Turnover?**

Jill Direnzo<sup>1,2</sup>, Kimberly Whiteman<sup>1</sup>

<sup>1</sup>Waynesburg University, Waynesburg, PA, <sup>2</sup>Allegheny Health Network - Forbes Hospital, Monroeville, PA

**21**

## **Peripherally Inserted Central Catheter (PICC) Insertion Reduction Initiatives and the Impact on Central Line-Associated Bloodstream Infection (CLABSI)**

Shawn Vietmeier

Allegheny General Hospital, Pittsburgh, PA

**22**

## **Predictors of Retention of Newly Licensed Registered Nurses**

Sandra Rader<sup>1</sup>, Sandra Engberg<sup>2</sup>

<sup>1</sup>UPMC Shadyside, Pittsburgh, PA, <sup>2</sup>University of Pittsburgh School of Nursing, Pittsburgh, PA

**23**

## **Implementing a Hospital Wide Charge Nurse Orientation**

Brittany Sheets

UPMC Magee-Womens Hospital, Pittsburgh, PA

**24**

## **Reaching Beyond 80% BSN-prepared Nurses: One Organization's Journey to Success**

Kristen Straka<sup>1</sup>, Diane Hupp<sup>1</sup>, Heather Ambrose<sup>2</sup>, Lauren Christy<sup>1</sup>

<sup>1</sup>UPMC Children's Hospital of Pittsburgh, Pittsburgh, PA, <sup>2</sup>UPMC Presbyterian, Pittsburgh, PA

**25**

## **Promoting Excellence in Bedside Shift Report to Optimize the Patient Experience**

Sharon Hanchett, Karen Urban, Kaite Falconi, Andrew Thomas, Sherri Jones

UPMC Shadyside, Pittsburgh, PA

**26**

## **Senior Nursing Leadership's Role in Improving First Year Turnover**

Paula Eicker, Michele Carlson

UPMC Children's Hospital of Pittsburgh, Pittsburgh, PA

**27**

## **Alternative Work Arrangements for Nurse Managers**

Dominique Ferrier, Lisa Bryan-Morris, Lisa Manni

UPMC Passavant, Pittsburgh, PA

**28**

## **Independent Double Check: Heightened Vigilance on Medication Safety**

Jacqueline Collavo, Paula Coe

Allegheny Health Network, Pittsburgh, PA

**67**

## **Transformational Leadership and Strategic Staff Allocation**

Jamie Seliga, Carissa Rosselli, Carrie Jeffery, Mpande Mwape

UPMC Passavant, Pittsburgh, PA

## **QUALITY and SAFETY**

**29**

## **Reducing Falls in an Inpatient Rehabilitation Unit**

Jennifer Maley

UPMC Jameson, New Castle, PA

**30**

## **Implementing CALF in the Emergency Department: A Sepsis Handoff Communication Tool to Increase Sepsis Bundle Compliance**

Rebecca Weiss

UPMC, Pittsburgh, PA

**31**

## **It Only Takes 7 Minutes: Use of Dedicated Time to Reduce Falls and Fall Related Injuries on a Medical Telemetry Unit**

James Rossi, Salanda Fernandez

UPMC Jameson, New Castle, PA

**32**

## **Decreasing Adverse Drug Events by Implementing Continuous Education**

Vittoria Dowds

UPMC Children's Hospital of Pittsburgh, Pittsburgh, PA

**33**

## **Data on the Fly**

Jane Lucas, David Moore, Sandra Hlipala

Washington Health System, Washington, PA

**34**

## **Celebrating a Decrease in Patient Falls**

Jill Kelley, Sharon Hanchett, Amy McLaughlin

UPMC Shadyside, Pittsburgh, PA

**35**

## **Skin Program Redesign - Investing in Frontline Staff to Reduce HAPIs**

Jessica Silvis, Lisa Leonzio

UPMC St. Margaret, Pittsburgh, PA



**36**

**Utilization of Institute for Healthcare Improvement Tools to Develop a Mortality Review Process**

Shelly McGonigal, Susan Leininger, Lori Laux, Darcy Shiner  
Allegheny General Hospital, Pittsburgh, PA

**37**

**Bye, Bye Paper! Implementing an Electronic Fall Form and Database**

Glenn Hasulak, Lynn Kosar, Katie McConnell  
UPMC Passavant, Pittsburgh, PA

**38**

**"Walking Out" VTE Events on an Orthopaedic Unit**

Renee Dixon, Kim Muoio, Beth Griffith, Chiara Huet, Danielle Jackson, Dennise Gitzen, Ezz-Eldin Moukamal, Paul Levy  
AHN Forbes, Monroeville, PA

**39**

**Improving the Timeliness of PACU Transfers**

Paula Sexton<sup>1,2</sup>, Mary Fanning<sup>2</sup>, Kimberly Stephens<sup>1</sup>, Kimberly Whiteman<sup>1</sup>

<sup>1</sup>Waynesburg University, Waynesburg, PA, <sup>2</sup>West Virginia University Medicine, Morgantown, WV

**40**

**Engaging Employees to Prevent Linen Loss**

Louise Dobbins<sup>1</sup>, Kimberly Whiteman<sup>2</sup>

<sup>1</sup>Allegheny General Hospital, Pittsburgh, PA, <sup>2</sup>Waynesburg University, Pittsburgh, PA

**41**

**Communication and Information Dissemination Team in the Surgical Intensive Care Unit**

Marian Longstreth<sup>1,2</sup>, Lya Stroupe<sup>1</sup>, Kimberly Stephens<sup>2</sup>, Kimberly Whiteman<sup>2</sup>

<sup>1</sup>West Virginia University Medicine, Morgantown, WV, <sup>2</sup>Waynesburg University, Waynesburg, PA

**42**

**Increasing Successful PICC Insertion at UPMC Presbyterian**

Colleen Cochenour, Jane Yutzy, Carol Scholle, Darlene Lovasik  
UPMC Presbyterian, Pittsburgh, PA

**43**

**Using Skills Validation to Decrease Variation in Central Line Care, Improves CLABSI Rates at UPMC Children's Hospital of Pittsburgh (CHP)**

Heather Womeldorff<sup>1</sup>, Jeanne Brytus<sup>1</sup>, Lisa Sheehan<sup>2</sup>, Arlene Carter<sup>1</sup>

<sup>1</sup>UPMC Children's Hospital of Pittsburgh, Pittsburgh, PA, <sup>2</sup>Wolff Center, Pittsburgh, PA

**44**

**Capillary Blood Glucose Levels and Correctional Insulin: Why Timing Matters**

Antanette Murphy, Kellie Antinori-Lent  
UPMC Shadyside Hospital, Pittsburgh, PA

**45**

**Extended Dwell Catheter Implementation in a Pediatric Population**

Arlene Carter, Christina Dunbar, Jonathan Rent, Diane Cancilla  
UPMC Children's Hospital of Pittsburgh, Pittsburgh, PA

**46**

**Aromatherapy to the Rescue for Postoperative Nausea and Vomiting**

Ursula Mellinger, Linda Lakdawala  
UPMC Shadyside, Pittsburgh, PA

**47**

**An Evidence-Based Approach to Implementing a Needlestick Injury Prevention Program**

Connie Henry<sup>1</sup>, Leeanna McKibben<sup>1</sup>, Kimberly Stephens<sup>2</sup>, Kimberly Whiteman<sup>2</sup>

<sup>1</sup>UPMC Mercy, Pittsburgh, PA, <sup>2</sup>Waynesburg University, Waynesburg, PA

**48**

**Care Team Modifications in Ambulatory Oncology Setting to Include a Collaborative Nurse Model: Impact on Patient Satisfaction**

Marjorie Leslie, Nikki Urban

Allegheny Health Network Cancer Institute, Pittsburgh, PA

**49**

**Workplace Violence Prevention: Building a Reporting System**

Jamie Malone

UPMC St. Margaret, Pittsburgh, PA

**50**

**Using Lean Principles to Achieve and Sustain ZERO CLABSI for over Eighteen Months**

Marsha Sneddon, Irma D'Antonio

AHN Jefferson, Jefferson Hills, PA

**51**

**Employing an Infusion Interventional Bundle to Reduce Intravenous Heparin Errors**

Ryan Rogers<sup>1,2</sup>, Kimberly Whiteman<sup>2</sup>, Justin Mulhollen<sup>1</sup>

<sup>1</sup>Canonsburg Hospital, Canonsburg, PA, <sup>2</sup>Waynesburg University, Waynesburg, PA



**52**

**Enhancing Knowledge and Safe Practice regarding Insulin Pump and Continuous Glucose Monitor Management in the Hospital**

Kelley Szalc, Christie Galcik, Lauren Detwiler, Courtney Ross, Mpande Mwape, Zach Perpetua, Sarah Ziccardi, Margaret Hayden  
UPMC Passavant, Pittsburgh, PA

**53**

**Medical Respite – Healthcare for The Homeless**

Kimberly Laing, Sharon Mackall  
UPMC Mercy Hospital, Pittsburgh, PA

**54**

**Clinical Support Team - A “Real-Time” Resource for Staff in Difficult Situations**

Krista Pryor, Peggy Jenkins  
St. Clair Hospital, Pittsburgh, PA

**55**

**Challenging Dogma: Enhanced Recovery after Surgery (ERAS) to Improve Patient Outcomes**

Joanna Hughes, Sharon Cropp, Denise Hanna, Thomas Natcher, Robert Kovatch, Leigh Nadler, Joseph Brula, Scott Holekamp  
St. Clair Hospital, Pittsburgh, PA

**56**

**Use of a Targeted Solutions Tool to Decrease Falls with Injury**

Donna Ross  
Excelsa Health Westmoreland Hospital, Greensburg, PA

**57**

**Developing an Educational Program on Alternatives to Restraints to Reduce Restraint Usage in the Medical/Surgical ICU**

Brett Mohney  
UPMC Mercy, Pittsburgh, PA

**58**

**Increased On-Time Operating Room (OR) First Case Starts**

Latasha Kast  
University of Pittsburgh, Pittsburgh, PA

**59**

**Enhancing Patient and Nurse Satisfaction through Relationship-Based Care and Implementation of a Primary Nursing Care Delivery Model in an Inpatient Psychiatric Setting**

Deborah Beer<sup>1,2</sup>, Dianxu Ren<sup>3</sup>, HeeYoung Lee<sup>3</sup>, Camellia Herisko<sup>1</sup>, Laura Fennimore<sup>3</sup>  
<sup>1</sup>UPMC, Pittsburgh, PA, <sup>2</sup>University of Pittsburgh, Pittsburgh, PA, <sup>3</sup>University of Pittsburgh, Pittsburgh, PA

**60**

**Utilizing Clinical Analytics to Develop and Implement a Hospital Readmission Program**

Deborah Schweitzer<sup>1</sup>, Kathleen Zell<sup>2</sup>, Heather Ambrose<sup>1</sup>, Michael Mathier<sup>2</sup>  
<sup>1</sup>UPMC Presbyterian Hospital, Pittsburgh, PA, <sup>2</sup>UPMC Heart Vascular Institute, Pittsburgh, PA

**61**

**The Role of the Rapid Response Team at End of Life**

Nicolette Mininni  
UPMC Shadyside, Pittsburgh, PA

**62**

**Decreasing 7 Day Readmission Rates: An Interdisciplinary Collaboration between Dietary and Nursing Focusing on Patient Education**

Dominique Ferrier, Katie Decker, Jennifer Hall  
UPMC Passavant, Pittsburgh, PA

**63**

**Prevention of Healthcare Associated Infections in Adult Intensive Care Units through Implementation of Disposable Chlorhexidine Gluconate-Impregnated Washcloth Bathing**

Edward Schatz, Stephanie Yuen  
West Penn Hospital, Pittsburgh, PA

**64**

**Standardizing Electronic Patient Discharge Instructions: A Process Improvement**

Beth Savage<sup>1</sup>, Patricia Glod<sup>1</sup>, Bonnie Anton<sup>1</sup>, Connie Feiler<sup>2</sup>, Jess Fesz<sup>3</sup>  
<sup>1</sup>UPMC St Margaret, Pittsburgh, PA, <sup>2</sup>Wolff Center at UPMC, Pittsburgh, PA, <sup>3</sup>UPMC, Pittsburgh, PA

**65**

**Collaborative Quality Improvement Initiative Drives Pressure Injuries to Zero**

Jacqueline Collavo, Shouted Hu  
Allegheny Health Network/West Penn Hospital, Pittsburgh, PA

**66**

**Proactive Identification of Patients at High Risk of Readmission**

Kaitlin Shotsberger, Monica Miller, Karl Bushman  
St. Clair Hospital, Pittsburgh, PA



## SWPONL Acknowledges the Generosity and Support from our 2019 Conference Sponsors

### DIAMOND Official Conference Sponsor



### PLATINUM



**Allegheny**  
Health Network



**BD**



**Hillrom™**

### GOLD



CAPELLA UNIVERSITY



**Sizewise®**  
Designed to heal

**UPMC** | CENTER FOR  
NURSING EXCELLENCE

# Celebrating 40 Years of Excellence in Nursing Leadership



2019 Annual Conference | Nemaacolin Woodlands Resort | August 29-30, 2019

Southwestern Pennsylvania  
Organization of  
NURSE LEADERS



## SILVER



## BRONZE



## UNIVERSITY ROW





## Thank You to the 2019 SWPONL Officers & Board of Directors



### Chair

*Jacqueline Collavo, MA, BSN, RN, NE-BC*  
AHN West Penn Hospital



### Past Chair

*Claire Zangerle, DNP, MSN, MBA, RN,  
FAONL, NEA-BC*  
Allegheny Health Network



### Chair Elect

*Jill Larkin, RN, MSN, MBA, DNP, CMQ/OE*  
UPMC, Center of Nursing Excellence



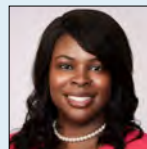
### Secretary/Treasurer

*Heather Ambrose, DNP, RN, NEA-BC,  
CENP, CPN*  
UPMC Presbyterian Shadyside



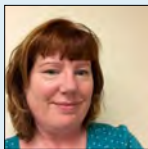
### At-Large Board Member

*Diane Cancilla, MSN, RN, NEA-BC*  
Children's Hospital of Pittsburgh



### At-Large Board Member

*Stacey-Ann Okoth, MBA, MSN, RN,  
PCCN, CNML, NEA-BC*  
UPMC Altoona and UPMC Bedford



### At-Large Board Member

*Louise Dobbins, BSN, MHA, FACHE*  
AHN Allegheny General Hospital



### At-Large Board Member

*Beth Savage, RN, MSN, PhD, NEA-BC,  
RN-BC*  
UPMC St. Margaret



### At-Large Board Member

*Jacqueline Drahos, MSN, RN*  
UPMC Jameson



### At-Large Board Member

*Aimee Skrtich, DNP, RN, CCRN, NE-BC*  
ICU Service Center, UPMC



### At-Large Board Member

*Lisa Graper, MSN, RN, NE-BC*  
AHN Wexford Hospital



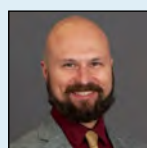
### At-Large Board Member

*Robin Weaver, PhD, RN, CNE*  
California University of Pennsylvania



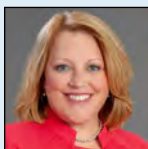
### At-Large Board Member

*Dawn Klejka, DNP, RN-BC*  
UPMC East and UPMC McKeesport



### Emerging Leader

*Edward C. Schatz V, MSN, MBA, CCRN,  
RN*  
AHN West Penn Hospital



### At-Large Board Member

*Lynn Kosar, MSN, RN, NEA-BC*  
AHN Forbes Hospital





## Dedications



Congratulations to SWPONL on 40 Years of Excellence in Nursing Leadership.

- The Nurse Leaders of Allegheny Health Network

UPMC Center for Nursing Excellence celebrates the seven outstanding individuals who were recipients of the 2019 Nurses Week Awards. Kyla, Velma, Lauren, Joanne, Susan, Jennifer and Ruth were honored for making significant contributions to nursing at UPMC. Thank you for providing quality and compassionate care to our patients every day.



- Rising Star in Clinical Practice: **Kyla Colcombe**, BSN, Professional Staff Nurse, UPMC Presbyterian
- Champion of Nursing: **Velma Dorsey**, Environmental Services Associate, UPMC Presbyterian
- Leading with Wisdom: **Lauren Leigh Gorman**, MSN, RN, Unit Director, UPMC Magee-Womens Hospital
- Legacy of Nursing: **Joanne Sorensen**, DNP, RN, FACHE, Chief Nursing Officer and Vice President of Patient Care Services, UPMC Northwest (retired)
- Spirit of Inclusion: **Susan Bender**, RN, Senior Professional Staff Nurse I, UPMC Presbyterian
- Outstanding Preceptor: **Jennifer Claire Dobrzynski**, BSN, RN, CPAN, Senior Professional Staff Nurse, UPMC Hamot
- Outstanding Patient Advocate: **Ruth Harris**, BSN, RN, ONC, Orthopedic Navigator Coordinator, UPMC St. Margaret



## Dedications

To the Nurse Leaders of the past, present and future of Allegheny Health Network, thank you for your contribution to the practice of nursing, nursing leadership and for your commitment to SWPONL.

With Gratitude,

*Claire M. Zangerle, DNP, MSN, MBA, RN, FAONL, NEA-BC*  
Chief Nurse Executive  
Allegheny Health Network



Congratulations to SWPONL on 40 successful years of dedication and commitment to Excellence in Nursing Leadership!

*Jacqueline Collavo, MA, BSN, RN, NE-BC*  
2019 Chair, SWPONL  
Chief Nursing Officer  
Allegheny Health Network/West Penn Hospital



To all the remarkable nurse leaders and aspiring nurse leaders of the future... Your collaboration and contributions to SWPONL and to the profession of nursing are to be commended! Continue to inspire, lead, and educate others. You make difference every day in the lives of our patients.

With sincere thanks,

*Jacqueline Collavo, MA, BSN, RN, NE-BC*  
2019 Chair, SWPONL  
Chief Nursing Officer  
Allegheny Health Network/West Penn Hospital



## Congratulations

to SWPONL on the 40th Anniversary!

May you continue to prosper and reach your dreams of excellence  
in the coming years and beyond.

We are proud to be your partner on this journey.



*Beth Kassalen, Linda Mason, Debbie Zaporoni, Barbara Hamschin, Amy Spikula,  
Elizabeth Mortimer, Amelia Addor, Ann Conlin, Jaymie Macek, Kate Kovalan,  
Jenn Butschle, and Donnina Contos*

# Congratulations

Duquesne University School of Nursing salutes the  
Southwestern Pennsylvania Organization of Nurse Leaders

on

**40** Extraordinary Years of  
Excellence in Nursing Leadership



[duq.edu/nursing](http://duq.edu/nursing)

## ONLINE NURSING DEGREES

- MSN NURSING ADMINISTRATION & LEADERSHIP
- MSN NURSING EDUCATION
- MSN-MBA
- RN-BSN



**CAL U**

# Designed to Heal<sup>®</sup>

Sizewise bed frames, support surfaces, and mobility items promote:

- Safe patient handling and mobility
- Caregiver injury prevention
- Pressure injury prevention
- Fall prevention
- Behavioral health patient safety

Stop by our booth or visit [sizewise.com](http://sizewise.com) to learn more



WPR-0019-C-0819

## FURTHER YOUR EDUCATION – ON YOUR SCHEDULE



### 100% Online RN to BSN

- Eight start dates per year
- Five-week online nursing classes
- Only \$243 per credit hour\*

### Master of Science in Nursing

#### 5 online tracks and certificates

- Adult-Gerontology Acute Care Nurse Practitioner
- Family Nurse Practitioner
- Nurse Educator
- Nurse Leader
- Psychiatric Mental Health Nurse Practitioner

### Doctor of Nursing Practice

#### 2 online tracks

- BSN to DNP and MSN to DNP tracks

\*Subject to change by Board of Trustees.

**5<sup>th</sup>** Most Popular  
In the Nation

**7<sup>th</sup>** MOST AFFORDABLE PUBLIC  
RN TO BSN PROGRAM  
IN THE NATION

Top **15%**  
for value!



Learn more at [ohio.edu/onlinehealth](http://ohio.edu/onlinehealth)



**OHIO**  
UNIVERSITY

COLLEGE OF HEALTH SCIENCES AND PROFESSIONS

Statistics sourced from College Factual and Nurse.org. Ohio University is an equal access/equal opportunity affirmative action institution.

The baccalaureate degree program in nursing, master's degree program in nursing, Doctor of Nursing Practice program and post-graduate APRN certificate programs at Ohio University are accredited by the Commission on Collegiate Nursing Education (<http://www.ccnaccreditation.org>).



## Innovative Healthcare Beds

Purposefully Designed for Caregivers and Patients

[www.LINETAmericas.com](http://www.LINETAmericas.com)



Hillrom is proud to sponsor  
the Southwestern Pennsylvania  
Organization of Nurse Leaders.



Hillrom™



# Changing Lives **Together**

**You are a dedicated caregiver, a clinical expert, an innovator, and a leader. Every day, you are changing health care for the better - and we want you on our team.**

A nationally ranked hospital system and insurance provider, UPMC touches millions of lives every year with Life Changing Medicine. With a team over 85,000 strong, we are boldly transforming health care for our communities. Come join us and make UPMC the place where you change lives.

For more information, visit us online at [upmc.com/nursingcareers](http://upmc.com/nursingcareers).



EOE/Disability/Veteran

73104 HRI&E 07/19

**RESPIRATORY  
COMPROMISE  
INTERVENE  
EARLIER  
MITIGATE  
THE IMPACT.**

MEDTRONIC CONTINUOUS  
MONITORING SOLUTIONS



SpO<sub>2</sub>



RR



etCO<sub>2</sub>



Remote Monitoring

To learn more about  
Respiratory Compromise visit  
the clinical solutions pages at  
[www.Medtronic.com/Covidien](http://www.Medtronic.com/Covidien)



## Who are we?

At Allegheny Health Network (AHN), we put our patients first. You get the right care at the right time in your neighborhood and throughout western Pennsylvania. And it's personalized according to your needs.

AHN employees make a significant impact on people's lives every day. They are a proud and passionate team who work together to provide the highest quality patient care – care that helps people live longer, healthier lives.

To learn more visit:  
[www.AHN.org/careers](http://www.AHN.org/careers)



## #LivingProof

Each day, Allegheny Health Network is a difference maker in these breakthroughs, making tomorrow's treatments even better than today.

- Technology to help neurosurgeons see the brain and spine in a whole new way.
- A breakthrough to destroy cancer cells that can't be seen with the naked eye.
- A robotic machine to fix a heart valve and quickly have a patient back in action.
- Artificial intelligence that greatly increases a stroke patient's chance at a promising recovery.

# Develop tomorrow's nurse leaders, today.

Learning and development is an investment of time and capital. With FlexPath, a self-paced learning format from Capella University, you can help develop the next wave of nurse leaders.

## FLEXPATH™

Help your nursing workforce earn their degree quickly and affordably:

With FlexPath, you can complete your RN-to-BSN program in 9 months and under \$10,000.

Assumes accelerated pace. Price varies by your pace and transfer credits. Other fees apply.



[es.capella.edu/swpon19](https://es.capella.edu/swpon19)



860.360.8047

**Accreditations:** Capella University is accredited by the Higher Learning Commission.  
**Higher Learning Commission:** <https://www.hlcommission.org>, 800.621.7440  
**Capella University:** Capella Tower, 225 South Sixth Street, Ninth Floor, Minneapolis, MN 55402 1.888.CAPELLA (227.3552) © 2019 Capella University 19-1271



CAPELLA UNIVERSITY

# Celebrating 40 Years of Excellence in Nursing Leadership



2019 Annual Conference | Nemaquin Woodlands Resort | August 29-30, 2019

Southwestern Pennsylvania  
Organization of  
NURSE LEADERS  
swponl

## Gold



**Capella University** is an accredited online university dedicated to providing exceptional, professionally-aligned education. Healthcare employers, including hundreds of hospitals, clinics, and care centers partner with Capella to develop critical talent. Multiple degree programs are available in the ground-breaking, direct assessment, FlexPath learning format and Capella's BSN, MSN, and DNP degree programs are accredited by the CCNE. Visit us while we're at SWPONL to learn how Capella can help you to meet your nurse development goals.



**Sizewise** designs, manufactures, and distributes state-of-the-art medical equipment, dedicated to advancing patient care and promoting caregiver safety. We have more than 20 years' experience engineering specialty surfaces, bed frames, and mobility devices to meet the needs of bariatric, geriatric, pediatric, and standard patient populations. Learn more at [sizewise.com](http://sizewise.com).



At **UPMC**, our more than 18,000 nurses and nursing support staff devote their lives to the health and well-being of our patients. Our nurses are healers, advocates, teachers, and innovators. UPMC has 50 specialty nursing roles across nearly 20 clinical specialties. This gives our nurses endless ways to develop professionally and grow throughout their entire careers.

## Silver



**California University of Pennsylvania** offers affordable, quality, 100% online, and CCNE-accredited programs for nurses. 120-credit RN-BSN program includes 30 transfer credits from ADN or Diploma nursing courses, and 12-credits from prior learning portfolio. Complete RN-BSN nursing courses in 12 months full time or four terms part time. MSN programs in Nursing Administration & Leadership or in Nursing Education offered part time. MSN-MBA and MBA in Nursing Administration programs use up to 12 credits from your graduate nursing administration program to fulfill MBA program electives. To learn more go to <https://>



At **Duquesne**, we offer a transformational education for the mind, heart and spirit. Faculty pride themselves on creating an energetic, engaging learning environment, one that emphasizes ethical practice, community service and a commitment to social justice in addition to leading edge technologies and curriculum. The School of Nursing has a rich innovative 82-year history that includes the first online PhD in Nursing Program in the nation in addition to other ground-breaking programs such as our Dual Undergraduate Degree in Nursing and Biomedical Engineering, Forensic Nursing Program and a PhD in Nursing Ethics Program.



**LINET** offers a new approach to the hospital bed market manufacturing innovative beds for the ICU, Med/Surg., Labor & Delivery, Long-Term Care, and NEWLY introduced Stretchers. Our simple, yet modern healthcare designs are the result of years of close partnerships with healthcare professionals from all over the world. We promote patient and nurse safety that facilitate early mobilization, assist in better adherence to turning schedules, improve pain management, wireless EMR interface, and help reduce infection rates. Customers are looking for better value and a lower cost of ownership for their medical equipment. With today's challenging economic climate, our company realizes the need for an alternative to the status quo by offering these unique products. Linet's long-standing success is, above all, based on its innovations, which help define the standard of quality in healthcare. Please stop and visit with us and see why we are different.



Making healthcare better is our priority and we believe technology can play an even greater role in improving people's lives. In addition to alleviating pain, restoring health, extending lives, we work in partnership with others to create seamless, more efficient care. Learn how we're taking healthcare Further, Together at [Medtronic.com](http://Medtronic.com)



**Ohio University's College of Health Sciences and Professions** is one of the largest health-focused colleges in the country, graduating more than 3,600 students each year. The college houses 35 well-respected programs in its six academic units: the School of Applied Health Sciences and Wellness; the School of Nursing; the School of Rehabilitation and Communication Sciences; the Department of Social and Public Health; the Department of Social Work and the Department of Interdisciplinary Health Studies.



# Celebrating 40 Years of Excellence in Nursing Leadership



2019 Annual Conference | Nemaquin Woodlands Resort | August 29-30, 2019

Southwestern Pennsylvania  
Organization of  
**NURSE LEADERS**  
SWPONA

## Bronze



**AccuVein**, the leader in vein illumination, helps locate veins for IV starts and blood draws. The AccuVein AV400 vein illumination device provides a map of the patient's vasculature on the skin's surface. The AV400 is portable and



**AMT** is a medical device manufacturer of Enteral Feeding Tubes, Accessories, Cecostomy & Surgical Line. MiniONE® low-profile (Balloon, Non-Balloon, Capsule NB) Gastrostomy Tubes, G-JET® low-profile Gastric-jejunal Tube, AMT Bridle™ Nasal Tube Retaining System, CINCH™ Tube Securement Device and MiniACE™ low-profile Antegrade Continence Enema Button, Remora® Smoke&Fluid Tube Evacuator, TLC® Self-Retaining Retractor Systems, Wilson™ Retractors for Male Urologic Surgery. Made in the USA! Innovating. Educating. Changing Lives.™



**ASCC** is a full-service information technology systems and network integration company. Our goal is to develop and implement cost-effective, standards-compliant solutions that exceed customers' expectations and develop long term relationships.



**Aya Healthcare** is reimagining healthcare staffing and workforce solutions across the United States. We are the largest privately held travel nurse and workforce solutions provider and deliver solutions for all aspects of healthcare staffing including locums, allied health and just-in-time local staff. The company continues to experience rapid growth as it reshapes the healthcare workforce landscape through its transformative use of technology including its cloud-based MSP solution and real-time Shifts app for per diem clinicians. Aya's platform provides access to one of the largest sources of contract clinicians in the country, which improves efficiency, increases quality and reduces costs for healthcare systems.



Bringing you Medical Technology for Tomorrow - **Clinical Technology Inc. (CTI)** is a leading specialty distributor of medical products in the mid-western region of the United States. Current owner, Dennis Forchione founded CTI in 1978. CTI specializes in service and support for all your practice needs. We continue to research the market to identify and supply you with the latest products and services for each of the following specialties: 1. Interventional Radiology and General Surgery, 2. Nursing and I.V. Therapy and 3. Interventional Pain and Anesthesia.



**Dale** products are designed to help the healing process, reduce skin irritation and save nursing time. Manufactured to rigorous standards, Dale products contain only the highest quality materials ensuring unparalleled durability and optimal patient comfort. Visit us at: [www.dalemed.com](http://www.dalemed.com).



For more than 40 years, **Genentech** has been following the science, seeking solutions to unmet medical needs. As a proud member of the Roche Group, we make medicines to treat patients with serious medical conditions. We are headquartered in South San Francisco, California.



**Healthcare Solutions, USA** has over 30 years of healthcare equipment experience. Offering Safe Patient Handling consultation services, education, and products via HoverTech International, the world leader in air assisted patient repositioning products. Featuring HoverMatts for turning, boosting, and transferring dependent, trauma, and pain sensitive patients. Great for HAPI reduction too. And the HoverJack, for picking fallen patients up off the floor with NO MANUAL LIFTING. Also, lifts and slings to meet all your SPHM needs.



**LifeCare** is a leading healthcare post-acute provider that is dedicated to improving the quality of life for patients and maximizing their potential for healing and recovery. We specialize in helping patients with expert, aggressive medical care. LifeCare Pittsburgh encompasses a full spectrum of post-acute services including wound care, ventilator management and other acute level illnesses as well as inpatient psychiatric treatment. Care teams meet patients in the most appropriate care setting for their specific needs to advance health, healing and recovery across the care continuum.




**Masimo** is a global medical technology company responsible for the invention of award-winning noninvasive technologies, medical devices, and sensors that are revolutionizing patient monitoring, including SET® pulse oximetry, rainbow® Pulse CO-Oximetry, noninvasive and continuous hemoglobin (SpHb®), acoustic respiration rate (RRa®), Patient SafetyNet™, SedLine® brain function monitoring, O3® regional oximetry, NomoLine™ capnography, and a variety of connectivity solutions.

# Celebrating 40 Years of Excellence in Nursing Leadership



2019 Annual Conference | Nemaquin Woodlands Resort | August 29-30, 2019

Southwestern Pennsylvania  
Organization of  
**NURSE LEADERS** 

## Bronze (continued)



**Medline** is a global manufacturer and distributor of medical products with patient-centered solutions, services and expertise across the continuum of care.



**Mölnlycke** is a world-leading medical solutions company. Our purpose is to advance performance in healthcare across the world, and we aspire to equip everybody in healthcare with solutions to achieve the best outcomes.



**The Morel Company** presents the Hercules Patient Repositioning System (™) which allows a single caregiver the ability to pull a patient up in bed in 10 seconds with the push of a button. Hercules saves the caregiver's back while protecting the patient's dignity and improving their overall experience.



**Newtech Systems, Inc.**, is an integrated technology provider focusing on enterprise class mission-critical technologies which ensure life safety, security and enhanced communications. We are a full service solutions integrator representing major manufacturers in healthcare communications & life safety, fire alarm, access control, video surveillance, professional audio/video communications, intrusion detection and many other solutions. We take pride in our ability to provide our clients with qualitative consultation, engineering, installation, preventive maintenance and service of our solutions.



United Medical Products has teamed up with **Nihon Kohden** as its largest provider of hospital monitoring products in the North East United States. We offer a full range of Nihon Kohden monitoring products, consultation and training on the products and the very best in installation. This allows you to focus your attentions on other aspects of your operating room or medical facility construction or redesign knowing that the medical monitoring spectrum has been covered.



**Omnicell** is a leader in medication and supply dispensing automation, central pharmacy automation, IV compounding technology, analytics software, robotics and adherence. Join the journey to Autonomous Pharmacy where automation, intelligence, and industry leading expertise enable caregivers everywhere to focus more on patients.



**RQI Partners** blends the AHA's leadership in science and education with Laerdal's expertise in technology and implementation to achieve resuscitation quality excellence in healthcare through the Resuscitation Quality Improvement® and HeartCode® portfolio. Verified CPR competence is the new standard of care. It is achieved through an approach that provides regular practice with objective audio and visual feedback, customized to the needs of the learners and accessible near the point of care.



Why **Vocera**: Ease the work of nurses, doctors, and everyone who delivers care, with Vocera solutions. Communicate and collaborate with less effort. Make informed decisions quickly. Smooth the flow of information among people and clinical and operational systems. Get unmatched clinical expertise for workflow design, proven security compliance, and the flexibility to choose the right communication device for the role.



Healthcare Furniture for Patient, Family and Public Areas. **Wieland** builds Patient Room and Lobby furniture designed specifically for the comfort and accessibility of the patient and caregiver alike. Patient recliners are available in a wide variety of styles to fit many applications. Moisture barrier and renewability are standard. See our Recliners, Gliders, Sleep Chairs, and Hip Chairs.

### **The Southwestern Pennsylvania Organization of Nurse Leaders (SWPONL)**

supports and adopts the mission and vision of:

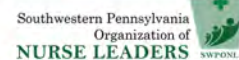


**The Pennsylvania Organization  
of Nurse Leaders (PONL).**

# Celebrating 40 Years of Excellence in Nursing Leadership



2019 Annual Conference | Nemaocolin Woodlands Resort | August 29-30, 2019



## University Row



**Chatham's** fully online RN-to-BSN, MSN and DNP programs prepare nurses to have a strong presence in decisions impacting the future of healthcare. We educate our students to work outside of traditional roles in order to understand and lead change. Our graduates are poised to assume roles in education, leadership, informatics, quality improvement, and health promotion in a variety of healthcare settings.



**Grand Canyon University** is Arizona's premier, nonprofit, private Christian university committed to delivering affordable, transformative higher education. GCU's nine colleges offer more 200 academic programs, including 150 online academic programs, for traditional students and working professionals. Students may learn on GCU's vibrant campus or as part of a dynamic online learning community. Find your purpose at [gcu.edu](http://gcu.edu).



**La Salle University** is paving the way to preparing the next generation of nurse leaders. Our affordable nursing programs deliver rigorous, evidence-based curriculum with 100% online coursework to educate clinically competent, caring nursing professionals. We offer our nursing students essential knowledge and skills to deliver clinical excellence in practice, service, and scholarship. All three of our online CCNE-accredited nursing programs emphasize quality and safety in patient care while also instilling lifelong learning as a hallmark of professional nurses.



This nationally-ranked School offers TWO ONLINE LEADERSHIP OPTIONS: (1) Health Systems Executive Leadership (HSEL) MSN/master's to DNP (customized curriculum for executive (CEO/CNO) leadership in complex healthcare systems, and (2) Clinical Nurse Leader MSN (bridge to HSEL DNP). Additional ONLINE OPTIONS: RN-BSN, RN-MSN (Clinical Nurse Leader or Nursing Informatics), and Post-Master's DNP (master's degree in same focus). ([www.nursing.pitt.edu](http://www.nursing.pitt.edu) / 1-888-747-0794)



Make an impact on the future of nursing. Advance your education at **Walden**. In the report The Future of Nursing, the Institute of Medicine recommends that 80% of nurses hold a bachelor's degree or higher by 2020. When SWPONL partners with Walden, you can take advantage of a 10% tuition reduction plus grants on our CCNE-accredited nursing programs. Visit [waldenu.edu/PONL](http://waldenu.edu/PONL) or call 1-855-628-1499 to learn more.



**Waynesburg University** is a private Christian university that offers accelerated graduate programs in business, counseling, criminal investigation, education and nursing. The Nursing programs include RN to BSN, MSN with concentrations in administration, education or informatics and the Doctor of Nursing Practice with an executive leadership focus. With an emphasis on affordability and flexibility, classes are offered online and at four convenient locations in Cranberry, Monroeville, Southpointe and Waynesburg. Waynesburg University also offers cohorts in local area hospital upon request.



## Thank You to our Sponsors and Exhibitors

Please visit and support our sponsors and exhibitors during the conference. Their support is instrumental in having a successful conference and provides an opportunity for attendees and companies to interact personally.

### Diamond

# stryker

**Stryker's** Medical division develops innovative medical equipment focused on improving outcomes for patients and caregivers. We are focused on safety, prevention, and ease of use - bringing caregivers confidence and delivering proven outcomes. Together with our customers, we are driven to make healthcare better.

### Platinum



**Allegheny  
Health Network**

At **Allegheny Health Network (AHN)**, we put our patients first. You get the right care at the right time in your neighborhood and throughout western Pennsylvania. And it's personalized according to your needs. Our doctors, nurses, and staff are experts in the latest medical research and technology, but they specialize in compassion. At AHN, we're committed to providing you with the best possible care that's affordable. Our multidisciplinary teams share knowledge and collaborate on your care plan. And we are here when you need us — even if you call the same day or need to come in after hours. You are the Living Proof of why we do what we do. And the difference we can make.



**BD** is a global medical technology company that is *advancing the world of health* by improving medical discovery, diagnostics and the delivery of care. The company provides innovative solutions that help advance medical research and genomics, enhance the diagnosis of infectious disease and cancer, improve medication management, promote infection prevention, equip surgical and interventional procedures, and support the management of diabetes. BD has nearly 50,000 associates across 50 countries who work with customers and partners to help enhance outcomes, lower health care delivery costs, increase efficiencies, improve health care safety and expand access to health. [bd.com](http://bd.com).



**Hillrom™**

**Hillrom** is a global medical technology leader whose 10,000 employees have a single purpose: enhancing outcomes for patients and their caregivers by advancing connected care. Around the world, our innovations touch over 7 million patients each day. They help enable earlier diagnosis and treatment, optimize surgical efficiency and accelerate patient recovery while simplifying clinical communication and shifting care closer to home. We make these outcomes possible through connected smart beds, patient lifts, patient assessment and monitoring technologies, caregiver collaboration tools, respiratory care devices, advanced operating room equipment and more, delivering actionable, real-time insights at the point of care. Learn more at [hillrom.com](http://hillrom.com)