

Nurse Leaders: Building a **Strong Foundation** for **Resiliency**

2018 Annual SWPONL Conference

August 30-31, 2018

Nemacolin Woodlands Resort
Farmington, Pennsylvania

SOUTHWESTERN PENNSYLVANIA ORGANIZATION OF

Nurse Leaders

Dear Colleagues:

I invite you to attend the 39th Annual Southwestern Pennsylvania Organization of Nurse Leaders Education Conference! The theme of our conference this year is “*Nurse Leaders – Building a Strong Foundation for Resiliency*”.

The changing landscape of healthcare has an effect on nurse leaders as they manage such a complex environment. While most change is positive, it can take a toll. With that in mind, the SWPONL Education Committee created an amazing agenda of offerings designed to support your leadership. During the conference, you will learn about ways nurse leaders can truly thrive in these challenging times through building a foundation of resiliency.

We are excited to present a variety of topics from exploring the connection between consumer and provider expectations to examining skills necessary to optimize personal and team performance. Speakers will provide strategies to support your teams as workplace violence increases and threatens resiliency. Topics around engagement, a healthy work environment, and bringing the joy back to your practice rounds out this robust agenda.

In addition to the conference speakers, you will not want to miss the opportunity to browse the impressive collection of poster presentations. This is always a highlight of the conference. The exhibit hall is also a must see. The sponsors and exhibitors are generous in their support of this educational activity and we are grateful for that. Please take some time to thank them for their support and interact with them all at various times throughout the conference.

The networking event continues to be one of the highlights of the conference, where you can connect with other nurse leaders in the region. Part of building the foundation for resiliency is rooted in bonding with others – and this is a terrific opportunity to connect. I look forward to seeing you in August and hope that you will attend!

Sincerely,

Claire M. Zangerle



Claire M. Zangerle, DNP, MSN, MBA, RN, NEA-BC
Chair, SWPONL

Conference Objectives

- Explore the facets of healthcare consumerism to remove the barriers for patients and their caregivers in bridging the expectations of the consumer versus the healthcare providers
- Identify strategies to handle violence in the workplace to support your healthcare team
- Examine resilient leadership skills that optimize personal and team performance
- Explore effective actions for the nurse leader to develop work-life balance
- Discuss solutions for creating a healthy work environment to prevent burnout, promote high staff engagement and to return joy to the practice of nursing

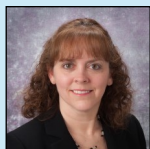
**In Recognition of their Dedication in the Planning of the
2018 SWPONL Conference**

Education and Membership Committees

Chair, Education Committee



Deborah Vehec, MSN, RN
Manager of Special Programs
Bone Marrow Donor Coordinator
ITxM, Central Blood Bank



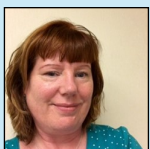
Denise Abernethy, MSN, RN, CEN
Clinical Director
UPMC St. Margaret



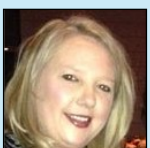
Diane Cancilla, MSN, RN
Unit Director, Radiology Department
Children's Hospital of Pittsburgh



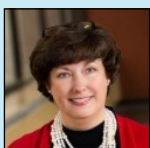
Regina Davin, RN, MSN
Associate Nurse Executive
Washington Health System



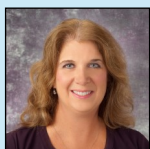
Louise Dobbins, BSN, MHA, FACHE
Director, Hospital Operations
Allegheny General Hospital



Jacqueline Drahos, MSN, RN
Unit Director
UPMC Jameson

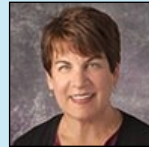


Laura Fennimore, DNP, RN, NEA-BC
Professor
University of Pittsburgh



Lauren Goman, MSN, RN
Unit Director Adult ICU
Magee Women's Hospital of UPMC

Chair, Membership Committee



Michele Carlson, MSN, RN, CPN
Clinical Director
Children's Hospital of Pittsburgh of UPMC



Lisa A. Manni, MSN, RN, NEA-BC
Clinical Director, Critical Care &
Emergency Services
UPMC Passavant



Robin Myers, MSN, CRNP
Advanced Clinical Education Specialist
UPMC Mercy



Evelyn Ozanich MSN, RN, CCRN
Director, Cardiac Transplant, Mechanical
Circulatory Support Program
Allegheny General Hospital



Aimee L. Skrtich, DNP, RN, CCRN, NE-BC
Clinical Program Director
ICU Service Center
UPMC



Shelley Watters, DNP, RN, NE-BC
Director, Cultural Excellence
UPMC Presbyterian Shadyside



Robin Weaver, PhD, RN, CNE
Global Online Coordinator RN-BSN
Program, Assistant Professor
California University of Pennsylvania



Linda R. Mason
Conference Project Manager
SWPONL

Conference Details

Networking & Poster Reception

Please join us for the **Networking & Poster Reception on Thursday, August 30, from 6:30pm – 8:00pm.** Attendees will have the opportunity to enjoy a light reception with desserts and drinks (one drink ticket will be provided for each attendee.) This is an ideal opportunity to network and catch up with old as well as new acquaintances. The reception is included in the registration and all are welcome! Due to popular request, the poster authors will be available during the reception.

Posters

The abstracts that were accepted for posters will have their posters displayed throughout the Conference and the authors will be available for discussion during the breaks and at the Poster Reception as noted in the program. The poster presentations offer a time for nurse leaders to network and share ideas about unique practice methods and solutions for a variety of healthcare settings. Poster abstracts were reviewed on the basis of original research, practice, or educational focus for a completed or in progress nursing leadership project or innovative approach.

Exhibits

Please visit and support our sponsors and exhibitors in the exhibit hall during the conference. The exhibitors and sponsors help to support this important educational activity for SWPONL and provide an opportunity for attendees and companies to interact personally.

Resort Activities

SWPONL attendees receive a 10% special discount on resort activities. Please make your reservations in advance to take advantage of this offer.

Conference Registration and Fees

Take advantage of the registration discount and register early!

FULL CONFERENCE RATES

	<u>Before August 3</u>	<u>After August 3</u>
SWPONL Active Member	\$325	\$375
*Non-Member	\$450	\$500
Student	\$250	\$300

ONE DAY CONFERENCE RATES

SWPONL Active Member	\$175
*Non-Member	\$250
Student	\$125

[Conference Registration](#)

Check payments – please mail the payment with the invoice to SWPONL, 461 Cochran Road, Box 246, Pittsburgh, PA 15228. If you have any questions, please contact us at 412-344-1414 or at lindam.kme@gmail.com. Cancellations must be received in writing. A \$25 cancellation fee will be deducted up to August 3, 2018. No refunds can be made after August 4th for cancellations.

Thursday, August 30, 2018

7:30AM - 9:00AM **Registration, Continental Breakfast with Exhibitors and Poster Session**

9:00AM - 9:15AM **Opening Remarks and SWPONL Chair Welcome**

Claire Zangerle, DNP, MSN, MBA, RN, NEA-BC

Chief Nursing Officer

Allegheny Health Network

Pittsburgh, Pennsylvania



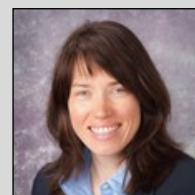
9:15AM - 10:15AM **Keynote Presentation – The Healthcare Consumer:
Caring for the Modern Patient**

J. Joy Gero, PsyD

Manager, Patient Relations Office

Children's Hospital of Pittsburgh of UPMC

Pittsburgh, Pennsylvania



10:15AM -10:45AM **Refreshment Break, Visit Exhibits, Posters and Raffle**

10:45AM -11:45AM **Hospital Based Peer Support Teams**

Erica Diethorn, RN

Approved Instructor

International Critical Incident Stress Foundation

Psychiatric Emergency Nurse

UPMC Mercy

Pittsburgh, Pennsylvania



11:45AM -12:45PM **Lunch / Networking**

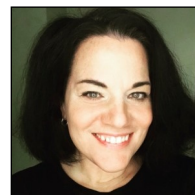
12:45PM - 1:30PM **How a Digital Detox and Unplugging in our Everyday Life
Can Bring Us Balance**

Holly Maust

Life Coach

Digital Wellness

Pittsburgh, Pennsylvania



1:30PM - 2:15PM **Dessert Break, Visit Exhibits, Posters and Raffle**

SWPONL Mission

To support the professional development of nurse leaders through collaboration, advocacy and education.

SWPONL Vision

To position nurse leaders to influence the future of healthcare in Southwestern Pennsylvania.

2:15PM - 3:30PM

**Advancing and Sustaining Evidence-Based Practice and Clinician Well-Being:
Key Strategies to Reach the Quadruple Aim in Healthcare**

Bernadette M. Melnyk, PhD, RN, APRN-CNP, FAANP, FNAP, FAAN

Vice President for Health Promotion

University Chief Wellness Officer

Dean and Professor, College of Nursing

Professor of Pediatrics & Psychiatry, College of Medicine

Executive Director, The Helene Fuld Health Trust National Institute for EBP

The Ohio State University

Columbus, Ohio



3:30PM - 6:30PM

Free Time to Enjoy the Resort

6:30PM - 8:00PM

Networking and Poster Reception

SOUTHWESTERN PENNSYLVANIA ORGANIZATION OF
Nurse Leaders

Save the Date
August 29-30
2019

SWPONL 2019 Annual Conference
Nemacolin Woodlands Resort
Farmington, Pennsylvania

The graphic features a blurred background of a healthcare professional in a white coat with a stethoscope. A pink sticky note is held in the foreground with handwritten text. The logo for the Southwestern Pennsylvania Organization of Nurse Leaders is in the top right, and the conference details are at the bottom.

Friday, August 31, 2018

7:00AM - 8:00AM **Registration, Continental Breakfast with Exhibitors and Poster Session**

8:00AM - 8:45AM **SWPONL Updates and Passing of the Gavel**
Claire Zangerle, DNP, MSN, MBA, RN, NEA-BC
Chief Nursing Officer
Allegheny Health Network
Pittsburgh, Pennsylvania



8:45AM - 9:45AM **Want to Increase Healthcare Performance? You MUST Tackle Harassment and Demand Inclusion**
John Lasky
Chief Human Resources Officer
Temple University Health System
Philadelphia, Pennsylvania



9:45AM -10:45AM **Keynote Presentation - Preventing Clinician Burnout: Returning Joy to Patient Care**
Paul DeChant, MD, MBA
Deputy Chief Health Officer
Simpler Consulting
San Ramon, California



Paula Roe, FACHE
Operational Excellence Practice Leader
Senior Consultant
Simpler Consulting
The Ohio State University
Cincinnati, Ohio



10:45AM -11:15AM **Refreshment Break, Visit Exhibits and Posters**

11:15AM -12:15PM **Closing Keynote**
Paul DeChant, MD, MBA
Deputy Chief Health Officer
Simpler Consulting
San Ramon, California



Paula Roe, FACHE
Operational Excellence Practice Leader
Senior Consultant
Simpler Consulting
The Ohio State University
Cincinnati, Ohio



12:15PM -1:00PM **Announcement of Poster Winners, Gift Baskets, Giveaways and Adjournment**

Conference Venue

SWPONL's 39th Annual Educational Conference will be held once again at Nemaquin Woodlands Resort due to popular demand. Located in Farmington, Pennsylvania, Nemaquin has the best of both worlds: meeting rooms that allow attendees to engage fully in the educational sessions as well as an array of activities to enjoy at your leisure.

This luxury resort on 2,000 wooded acres is one of only six hotels and resorts in the world to host Forbes Five-Star, AAA Five-Diamond lodging and dining. In addition to the internationally acclaimed Woodlands Spa, the resort offers 36-holes of championship golf on two courses – the Pete Dye designed, PGA-tested Mystic Rock and the traditional Links Course, Nemaquin Field Club, featuring the Shooting Academy, an outdoor sporting facility on 140 acres complete with 30-stations, wing shooting, a spacious lodge, and fly fishing. Nemaquin Woodlands Resort offers guests so many options that it is often referred to as 2,000 acre resort playground! Visit www.nemaquin.com for a complete list of available activities.

Nemaquin Woodlands Resort
1001 Lafayette Drive
Farmington, PA 15437
Phone: 724-329-8555
Check-in: 4pm / Check-out: 11am



SWPONL Group Conference Room Rates

The Lodge: \$175 Single/Double plus taxes
Chateau Lafayette: \$205 Single/Double plus taxes
Reservations Phone: 1-800-422-2736
Group code: SWPONL

All reservations must be received by **July 30, 2018** to ensure you get the discounted rate. **The special conference rate and room availability cannot be guaranteed after the July 30, 2018 cut-off date.**

[Hotel Reservations](#)

Special Offerings for SWPONL Conference Attendees

- Group room rate extended 3 days prior / 3 days after the conference for SWPONL attendees.
- Waived resort fee for SWPONL Conference attendees.
- Discount of 10% on activities for all SWPONL conference attendees - must be pre-planned to take advantage of this discount by calling 1-866-344-6957.
- Complimentary WiFi access in the meeting rooms and in the guest rooms.

Resort Deadlines / Refunds

No refunds can be made for hotel cancellations made after August 1, 2018 or for no-shows.

Thank You to the 2018 SWPONL Officers & Board of Directors



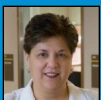
Chair

Claire Zangerle, MSN, MBA, RN
Allegheny Health Network



Past Chair

Diane Hupp, DNP, RN, NEA-BC
Children's Hospital of Pittsburgh of UPMC



Chair Elect

Jacqueline Collavo, MA, BSN, RN, NE-BC
West Penn Hospital



Secretary/Treasurer

Heather Ambrose, DNP, RN, CPON, CPN
Children's Hospital of Pittsburgh of UPMC



At-Large Board Member

Denise Abernethy, MSN, RN, CEN
UPMC St. Margaret



At-Large Board Member

Beth Savage, RN, MSN, PhD, NEA-BC, RN-BC
UPMC St. Margaret



At-Large Board Member

Diane Cancilla, MSN, RN, NEA-BC
Children's Hospital of Pittsburgh of UPMC



At-Large Board Member

Aimee Skrtich, DNP, RN, CCRN, NE-BC
University of Pittsburgh Physicians



At-Large Board Member

Louise Dobbins, BSN, MHA, FACHE
Allegheny General Hospital



At-Large Board Member

Robin Weaver, PhD, RN, CNE
California University of Pennsylvania



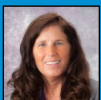
At-Large Board Member

Jacqueline Drahos, MSN, RN
UPMC Jameson



Emerging Leader

Michael Simon, RN
Allegheny General Hospital



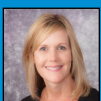
At-Large Board Member

Jill Larkin, RN, MSN, MBA, DNP, CMQ/OE
UPMC, Center of Nursing Excellence



Emerging Leader

Joseph Barkovich, BA, MSN, RN
VA Pittsburgh Healthcare System



At-Large Board Member

Robin Myers, MSN, CRNP
UPMC Mercy

SWPONL Acknowledges the Generosity and Support from our 2018 Conference Sponsors

Gold



Silver



Premium



SWPONL Acknowledges the Generosity and Support from our 2018 Conference Sponsors

Exhibitor

