

# Nurse Leaders: Building a **Strong Foundation** for **Resiliency**

---

2018 Annual SWPONL Conference

**August 30-31, 2018**

Nemacolin Woodlands Resort  
Farmington, Pennsylvania

## Final Program

SOUTHWESTERN PENNSYLVANIA ORGANIZATION OF

*Nurse Leaders*



## Develop tomorrow's nurse leaders, *today.*

Learning and development is an investment of time and capital. With FlexPath, a self-paced learning format from Capella University, you really can help develop the next wave of nurse leaders.

### **FLEXPATH™**

**Help your nursing workforce earn their degree quickly and affordably:**

- ▶ With FlexPath, the fastest students can complete their RN-to-BSN program for \$9,000.
- ▶ With FlexPath, the fastest students can complete their RN-to-BSN program in 9 months.

Based on fastest 10 percent of students. Program length and costs will vary by transfer credits, the per-session cost, and how quickly courses are completed.

**LEARN MORE**



**ES.CAPELLA.EDU/SWPONL18**



**CALL 860-360-8047**



**Dear Colleagues:**

Thank you for attending the 39<sup>th</sup> Annual Southwestern Pennsylvania Organization of Nurse Leaders Education Conference! The theme of our conference this year is “*Nurse Leaders – Building a Strong Foundation for Resiliency*”.

The changing landscape of healthcare has an effect on nurse leaders as they manage such a complex environment. While most change is positive, it can take a toll. With that in mind, the SWPONL Education Committee created an amazing agenda of offerings designed to support your leadership. During the conference, you will learn about ways nurse leaders can truly thrive in these challenging times through building a foundation of resiliency.

We are excited to present a variety of topics from exploring the connection between consumer and provider expectations to examining skills necessary to optimize personal and team performance. Speakers will provide strategies to support your teams as workplace violence increases and threatens resiliency. Topics around engagement, a healthy work environment, and bringing the joy back to your practice round out this robust agenda.

In addition to the conference speakers, you will not want to miss the opportunity to browse the impressive collection of poster presentations. This is always a highlight of the conference. The exhibit hall is also a must see. The sponsors and exhibitors are generous in their support of this educational activity and we are grateful for that. Please take some time to thank them for their support and interact with them all at various times throughout the conference.

The networking event continues to be one of the highlights of the conference, where you can connect with other nurse leaders in the region. Part of building the foundation for resiliency is rooted in bonding with others – and this is a terrific opportunity to connect. Again, thank you.

Sincerely,



*Claire M. Zangerle*

Claire M. Zangerle, DNP, MSN, MBA, RN, NEA-BC  
Chair, SWPONL

## Conference Objectives

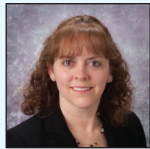
- Explore the facets of healthcare consumerism to remove the barriers for patients and their caregivers in bridging the expectations of the consumer versus the healthcare providers
- Identify strategies to handle violence in the workplace to support your healthcare team
- Examine resilient leadership skills that optimize personal and team performance
- Explore effective actions for the nurse leader to develop work-life balance
- Discuss solutions for creating a healthy work environment to prevent burnout, promote high staff engagement and to return joy to the practice of nursing

In Gratitude to the  
**Education and Membership Committees**  
for their Dedication and Planning of the 2018 SWPONL Conference

**Chair, Education Committee**



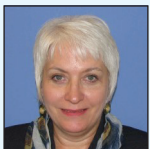
*Deborah Vehec, MSN, RN*  
Manager of Special Programs  
Bone Marrow Donor Coordinator  
ITxM, Central Blood Bank



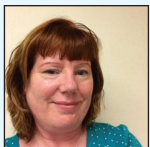
*Denise Abernethy, MSN, RN, CEN*  
Clinical Director  
UPMC St. Margaret



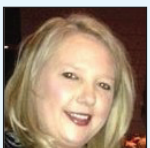
*Diane Cancilla, MSN, RN*  
Unit Director, Radiology Department  
Children's Hospital of Pittsburgh



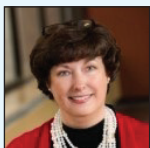
*Regina Davin, RN, MSN*  
Associate Nurse Executive  
Washington Health System



*Louise Dobbins, BSN, MHA, FACHE*  
Director, Hospital Operations  
Allegheny General Hospital



*Jacqueline Drahos, MSN, RN*  
Unit Director  
UPMC Jameson

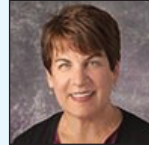


*Laura Fennimore, DNP, RN, NEA-BC*  
Professor  
University of Pittsburgh

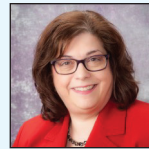


*Lauren Gorman, MSN, RN*  
Unit Director Adult ICU  
Magee Women's Hospital of UPMC

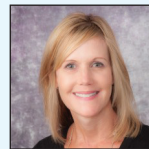
**Chair, Membership Committee**



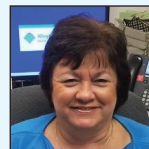
*Michele Carlson, MSN, RN, CPN*  
Clinical Director  
Children's Hospital of Pittsburgh of UPMC



*Lisa A. Manni, MSN, RN, NEA-BC*  
Clinical Director, Critical Care &  
Emergency Services  
UPMC Passavant



*Robin Myers, MSN, CRNP*  
Advanced Clinical Education Specialist  
UPMC Mercy



*Evelyn Ozanich MSN, RN, CCRN*  
Director, Cardiac Transplant, Mechanical  
Circulatory Support Program  
Allegheny General Hospital



*Aimee L. Skrtich, DNP, RN, CCRN, NE-BC*  
Clinical Program Director  
ICU Service Center  
UPMC



*Shelley Watters, DNP, RN, NE-BC*  
Director, Cultural Excellence  
UPMC Presbyterian Shadyside



*Robin Weaver, PhD, RN, CNE*  
Global Online Coordinator RN-BSN  
Program, Assistant Professor  
California University of Pennsylvania



*Linda R. Mason*  
Conference Project Manager  
SWPONL

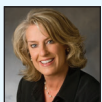
## Posters

We had a record submission of abstracts this year. It was a competitive year – congratulations to the accepted authors! Poster abstracts were reviewed on the basis of original research, practice, or educational focus for a completed or in progress nursing leadership project or innovative approach. The posters will be displayed throughout the Conference and the authors will be available for discussion during the breaks and at the Poster Reception as noted in the program. The poster presentations offer a time for nurse leaders to network and share ideas about unique practice methods and solutions for a variety of healthcare settings.

## Resort Activities

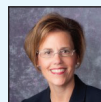
SWPONL attendees receive a 10% special discount on resort activities. Please make your reservations in advance to take advantage of this offer.

## Thank You to the 2018 SWPONL Officers & Board of Directors



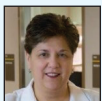
### Chair

*Claire Zangerle, DNP, MSN, MBA, RN, NEA-BC*  
Allegheny Health Network



### Past Chair

*Diane Hupp, DNP, RN, NEA-BC*  
Children's Hospital of Pittsburgh of UPMC



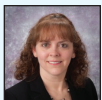
### Chair Elect

*Jacqueline Collavo, MA, BSN, RN, NE-BC*  
West Penn Hospital



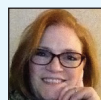
### Secretary/Treasurer

*Heather Ambrose, DNP, RN, CPON, CPN*  
Children's Hospital of Pittsburgh of UPMC



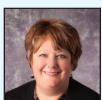
### At-Large Board Member

*Denise Abernethy, MSN, RN, CEN*  
UPMC St. Margaret



### At-Large Board Member

*Beth Savage, RN, MSN, PhD, NEA-BC, RN-BC*  
UPMC St. Margaret



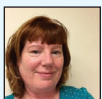
### At-Large Board Member

*Diane Cancellia, MSN, RN, NEA-BC*  
Children's Hospital of Pittsburgh of UPMC



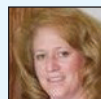
### At-Large Board Member

*Aimee Skrtich, DNP, RN, CCRN, NE-BC*  
University of Pittsburgh Physicians



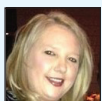
### At-Large Board Member

*Louise Dobbins, BSN, MHA, FACHE*  
Allegheny General Hospital



### At-Large Board Member

*Robin Weaver, PhD, RN, CNE*  
California University of Pennsylvania



### At-Large Board Member

*Jacqueline Drahos, MSN, RN*  
UPMC Jameson



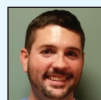
### Emerging Leader

*Michael Simon, RN*  
Allegheny General Hospital



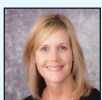
### At-Large Board Member

*Jill Larkin, RN, MSN, MBA, DNP, CMQ/OE*  
UPMC, Center of Nursing Excellence



### Emerging Leader

*Joseph Barkovich, BA, MSN, RN*  
VA Pittsburgh Healthcare System



### At-Large Board Member

*Robin Myers, MSN, CRNP*  
UPMC Mercy

## Thursday, August 30, 2018

7:00AM - 9:00AM **Registration, Continental Breakfast with Exhibitors and Poster Session**

9:00AM - 9:15AM **Opening Remarks and SWPONL Chair Welcome**  
*Claire Zangerle, DNP, MSN, MBA, RN, NEA-BC*  
Chief Nursing Officer  
Allegheny Health Network  
Pittsburgh, Pennsylvania



9:15AM - 10:15AM **Keynote Presentation – The Healthcare Consumer:  
Caring for the Modern Patient**  
*J. Joy Gero, PsyD*  
Manager, Patient Relations Office  
Children's Hospital of Pittsburgh of UPMC  
Pittsburgh, Pennsylvania



10:15AM –10:45AM **Refreshment Break, Visit Exhibits, Posters and Raffle**

10:45AM -11:45AM **Hospital Based Peer Support Teams**  
*Erica Diethorn, RN*  
Approved Instructor  
International Critical Incident Stress Foundation  
Psychiatric Emergency Nurse  
UPMC Mercy  
Pittsburgh, Pennsylvania



11:45AM -12:45PM **Lunch / Networking**

12:45PM - 1:30PM **How A Digital Detox and Unplugging In Our Everyday Life  
Can Bring Us Balance**  
*Holly Maust*  
Life Coach  
Digital Wellness  
Pittsburgh, Pennsylvania



1:30PM - 2:15PM **Dessert Break, Visit Exhibits, Posters and Raffle**

**(Program continued on page 7)**

### SWPONL Mission

To support the professional development of nurse leaders through collaboration, advocacy and education.

### SWPONL Vision

To position nurse leaders to influence the future of healthcare in Southwestern Pennsylvania.

2:15PM - 3:30PM

**Advancing and Sustaining Evidence-Based Practice and Clinician Well-Being:  
Key Strategies to Reach the Quadruple Aim in Healthcare**

*Bernadette M. Melnyk, PhD, RN, APRN-CNP, FAANP, FNAP, FAAN*

Vice President for Health Promotion

University Chief Wellness Officer

Dean and Professor, College of Nursing

Professor of Pediatrics & Psychiatry, College of Medicine

Executive Director, The Helene Fuld Health Trust National Institute for EBP

The Ohio State University

Columbus, Ohio



3:30PM - 6:30PM

**Free Time to Enjoy the Resort**

6:30PM - 8:00PM

**Networking and Poster Reception**

This is an ideal opportunity to network and catch up with old as well as new acquaintances. The reception is included in the registration and all are welcome!

Attendees will have the opportunity to enjoy a reception with dessert and drinks (one drink ticket will be provided for each attendee.)

**Contact Hours**

The Southwestern Pennsylvania Organization of Nurse Leaders and the University of Pittsburgh School of Nursing are jointly providing this educational activity. Nurses participating in the conference and completing the evaluation tool may be awarded a maximum of 7 continuing education contact hours. The University of Pittsburgh School of Nursing is accredited as a provider of continuing nursing education by the American Nurses Credentialing Center's Commission on Accreditation.

The evaluation link will be sent via email after the conclusion of the conference (through Survey Monkey). **In order to receive your Continuing Education Credits for this conference you must complete the survey by Wednesday, September 5<sup>th</sup>.** If you have any questions, please contact Linda Mason at: [lindam.kme@gmail.com](mailto:lindam.kme@gmail.com).

The contact hour certificate will be sent directly to attendees from the University of Pittsburgh.

**Speaker Handouts/Conference Materials**

The speaker's handouts and other conference related materials will be sent directly to conference attendees via email.



**Conference Venue**

**Nemacolin Woodlands Resort**

1001 Lafayette Drive

Farmington, PA 15437

(866) 344-6957

## Friday, August 31, 2018

7:00AM - 8:00AM **Registration, Continental Breakfast with Exhibitors and Poster Session**

8:00AM - 8:45AM **SWPONL Updates and Passing of the Gavel**  
*Claire Zangerle, DNP, MSN, MBA, RN, NEA-BC*  
Chief Nursing Officer  
Allegheny Health Network  
Pittsburgh, Pennsylvania



8:45AM - 9:45AM **Want to Increase Healthcare Performance? You MUST Tackle Harassment and Demand Inclusion**  
*John Lasky*  
Chief Human Resources Officer  
Temple University Health System  
Philadelphia, Pennsylvania



9:45AM - 10:45AM **Keynote Presentation - Preventing Clinician Burnout: Returning Joy to Patient Care**  
*Paul DeChant, MD, MBA*  
Deputy Chief Health Officer  
Simpler Consulting  
San Ramon, California

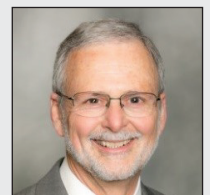


*Paula Roe, FACHE*  
Operational Excellence Practice Leader  
Senior Consultant  
Simpler Consulting  
The Ohio State University  
Cincinnati, Ohio



10:45AM - 11:15AM **Refreshment Break, Visit Exhibits and Posters**

11:15AM - 12:15PM **Closing Keynote**  
*Paul DeChant, MD, MBA*  
Deputy Chief Health Officer  
Simpler Consulting  
San Ramon, California



*Paula Roe, FACHE*  
Operational Excellence Practice Leader  
Senior Consultant  
Simpler Consulting  
The Ohio State University  
Cincinnati, Ohio



12:15PM - 1:00PM **Announcement of Poster Winners, Gift Baskets, Giveaways and Adjournment**



## Sponsors and Exhibitors

Please visit and support our sponsors and exhibitors during the conference. Their support is instrumental in having a successful conference and provides an opportunity for attendees and companies to interact personally.

### Premium



Founded in 1949, **Grand Canyon University** is a private, Christian university with more than 160 academic programs and more than 100 bachelor's, master's and doctoral online degrees within a dynamic learning environment for both traditional students and working professionals. Our classes involve engaging interaction with classmates and individual attention from faculty who care about student success.



**Hill-Rom** is a global medical technology company that's constantly innovating to ensure doctors, nurses and caregivers have the products they need to protect their patients, speed up recoveries, and manage conditions. From beds and vision screening devices to operating tables and airway clearance systems, our products and services are everywhere you need them, whenever and however you want to experience care. Visit [hill-rom.com](http://hill-rom.com) or contact [kimberly.duke@hill-rom.com](mailto:kimberly.duke@hill-rom.com).



Founded in 1990, **LINET** is an international leader in healthcare technology with patient beds installed in over 100 countries. Considered one of the most dynamic companies in the healthcare field, LINET offers a new and unique approach to the hospital bed market. LINET manufactures innovative beds for the ICU and Medical-Surgical environments that promote patient and nurse safety, facilitate early mobilization, assist in better adherence to turning schedules, improve pain management and help reduce infection rates. All of our products also come with an unprecedented 5-year warranty. The company's U.S. headquarters is based in Charlotte, NC. Please visit [www.linetamericas.com](http://www.linetamericas.com) for more information.



**Masimo** is a global medical technology company responsible for the invention of award-winning noninvasive technologies, medical devices, and sensors that are revolutionizing patient monitoring, including Masimo SET<sup>®</sup>, Masimo rainbow<sup>®</sup> Pulse CO-Oximetry<sup>™</sup>, noninvasive and continuous hemoglobin (SpHb<sup>®</sup>), acoustic respiration rate (RRa<sup>®</sup>), Masimo Patient SafetyNet<sup>™</sup>, SedLine<sup>®</sup> (EEG-based) Brain Function Monitors, and capnography monitors.



**Sizewise** sets the standard in service, safety, and savings by offering a full line of products and solutions designed to minimize caregiver injuries, reduce patient falls, and prevent pressure ulcer development. Sizewise equipment is manufactured in the USA and globally distributed in acute care, long-term care, and home care markets. [www.sizewise.com](http://www.sizewise.com) | 800-814-9389



**Wieland** is devoted to the patient and caregiver alike, innovatively addressing solutions for infection control, family needs, and improved patient outcomes. Moisture barrier and renewability are standard. Sleep sofas, recliners, gliders and lounge chairs are among our patient room and lobby offering.

### Exhibitors



**AccuVein**, the leader in vein illumination, helps locate veins for IV starts and blood draws. The AccuVein AV400 vein illumination device provides a map of the patient's vasculature on the skin's surface. The AV400 is portable and lightweight; simply point the device at the skin and click to display the peripheral veins beneath!



**Applied Medical Technology, Inc. (AMT)** is a global leader and manufacturer of **Enteral Feeding Devices & Accessories and Surgical Line**. Our products, **GI Line: MiniONE<sup>®</sup>** low-profile Balloon, Non-Balloon, and Capsule Non-Balloon buttons, the **G-JET<sup>®</sup>** low-profile gastric-jejunal enteral tube, and the **Bridle<sup>™</sup> Nasal Tube Retaining System**. **Surgical Line: Remora<sup>™</sup>** Smoke&Fluid Tube Evacuator, **TLC<sup>®</sup>** Self-Retaining Retractor Systems, and **Wilson<sup>™</sup>** Self-Retaining Retractor Systems for Male Urologic Surgery. All AMT products are proudly made in the USA! **Innovating. Educating. Changing Lives.**



**Advanced Solutions** - Hospitals are always looking for ways to increase their scores on patient exit surveys. ASCC provides the Tri-State Healthcare Community with customized solutions that progress around the constant transformation of technologies: Automation to streamline workflow processes and promote staff efficiencies; and quick, direct, content-rich communications to increase patient satisfaction. Let us provide you with an intuitive solution that will free you to do what you do best – provide superior patient care. Contact: Mark Bodo, Vince Bianco, or Michelle Pekich at 724-772-2722. [www.asccinc.com](http://www.asccinc.com)



**Aya Healthcare** creates exceptional experiences – for their clinicians, their corporate employees and the healthcare facilities they serve. For travel clinicians, Aya delivers the best experience in the industry and allows access to the widest base of travel assignments in the United States. For healthcare facilities, Aya delivers a robust suite of software and services to manage the procurement of contingent labor. Aya's platform provides access to one of the largest sources of contract clinicians in the country which improves efficiency, increases quality and reduces costs for healthcare systems. Healthcare Select, a subsidiary of Aya, offers clients a vendor neutral platform of contingent workforce solutions including strategic supplier managed services, consulting services and payroll services. For more information, visit [www.AyaHealthcare.com](http://www.AyaHealthcare.com).

## Exhibitors



**BD and Bard** have always been focused on helping clinicians efficiently deliver the best possible care to patients around the world. Now, with our complementary portfolios and the depth of our collective experience and expertise, we're even better positioned to help hospitals reduce complications and improve care.



**BD** is a global medical technology company that is advancing the world of health by improving medical discovery, diagnostics and the delivery of care. The company provides innovative solutions that help advance medical research and genomics, enhance the diagnosis of infectious disease and cancer, improve medication management, promote infection prevention, equip surgical and interventional procedures, and support the management of diabetes. BD has nearly 50,000 associates across 50 countries who work with customers and partners to help enhance outcomes, lower health care delivery costs, increase efficiencies, improve health care safety and expand access to health. [bd.com](http://bd.com).



*Bringing you Medical Technology for Tomorrow - **Clinical Technology Inc.*** (CTI) is a leading specialty distributor of medical products in the mid-western region of the U.S. Current owner, Dennis Forchione founded CTI in 1978. CTI specializes in service and support for all your practice needs. We continue to research the market to identify and supply you with the latest products and services for each of the following specialties: 1. Interventional Radiology and General Surgery, 2. Nursing and I.V. Therapy, and 3. Interventional Pain and Anesthesia.



**Dale** products are designed to help the healing process, reduce skin irritation and save nursing time. Manufactured to rigorous standards, Dale products contain only the highest quality materials ensuring unparalleled durability and optimal patient comfort. Visit us at: [www.dalemed.com](http://www.dalemed.com).



Founded 40 years ago, **Genentech** is a leading biotechnology company that discovers, develops, manufactures and commercializes medicines to treat patients with serious or life-threatening medical conditions. The company, a member of the Roche Group, has headquarters in South San Francisco, California. For additional information about the company, please visit. <http://www.gene.com/>.



**Health Care Solutions USA** is a Pittsburgh based manufacturer's representative with over twenty-five years of healthcare equipment experience. We are currently representing HoverTech International, the world leader in air assisted patient re-positioning HoverMatts, for turning, boosting, and lateral transfers; and the HoverJack, for picking a fallen patient up off the floor with no manual lifting. Also offering Lifts, Sit-to-Stands, and Slings through ProCare Medical are also offered to meet all your Safe Patient Handling needs. Free Risk Assessments are available.



**ICU Medical** is a leading provider of innovative infusion system technologies, needle free connectors, closed system transfer devices and large-volume IV solutions with world-class clinical field support services. We are uniquely positioned to help improve patient and clinician safety and enhance workflows, thereby enabling hospitals to reduce error potential, increase safety and efficiency and avoid costs.



**La Roche College** is a private, Catholic, co-educational college and welcomes students of all religions, ethnic origins and talents. Choose from more than 50 undergraduate majors including the online RN-BSN program. Additionally, the online Master of Science in Nursing (MSN) program which includes three specialties: MSN Administration, MSN Education and MSN Clinical Nurse Leader, was ranked among the best online nursing programs by US News and World Report. Both the Bachelor of Science degree program for registered nurses and the MSN are accredited by the Accreditation Commission for Education in Nursing. Please visit [www.laroche.edu](http://www.laroche.edu) for more information.



**LifeCare Hospitals of Pittsburgh** specialize in maximizing the recovery potential of acutely ill or injured patients. Many patients come to our hospitals after a stay in a community hospital or intensive care unit, however, patients can also be admitted from a skilled nursing facility, rehabilitation hospital, physician office, even from home. We provide a unique level of care for any patient whose clinical needs will benefit from extended inpatient hospitalization or specialized care. We help minimize the likelihood of hospital readmissions for patients who may not be ready to return home or to a skilled nursing facility. Our care teams specialize in treating acute respiratory disease, complex wounds, traumatic brain injury, renal failure, congestive heart failure, infections requiring antibiotic therapy, complications following surgical procedures and other conditions requiring expert care. We have four hospitals throughout SouthWestern PA, as well as a TCC and Behavioral Health Hospital.



**Mallinckrodt Pharmaceuticals** is an industry leader in providing specialty biopharmaceutical products used in the treatment of autoimmune and rare disease specialty areas, respiratory therapies, pain and related conditions, and diagnostic procedures. The company's segments include branded medicines and devices and generic drugs. Visit [www.mallinckrodt.com](http://www.mallinckrodt.com) to learn more.



Centurion Medical Products Division of **Medline Industries** develops products designed to improve outcomes. It offers a full line of single use instruments/instrument trays, Dressing Change Trays, IV Securement Kits and PIV Bundles, including SorbaView SHIELD® securement dressings. Also featuring the CVC Zone Bundle – a central line bundle with everything needed to help prevent CLABSIs, and introducing the innovative Compass™ products that quickly and easily measure physiological pressure and an extensive portfolio of securement devices for line stabilization.



As a global leader in medical technology, services and solutions, **Medtronic** improves the lives and health of millions of people each year. We use our deep clinical, therapeutic and economic expertise to address the complex challenges faced by healthcare systems today. Let's take healthcare Further, Together. Learn more at [Medtronic.com](http://Medtronic.com)



**Mölnlycke** is a world-leading medical solutions company. Our purpose is to advance performance in healthcare across the world, aspiring to equip everybody in healthcare with solutions to achieve the best outcomes. [www.molnlycke.com](http://www.molnlycke.com)



**Nihon Kohden** offers unrivaled monitoring technology that works across the healthcare continuum. We will highlight clinical benefits of implementing a Defensive Monitoring strategy with our Prefense™ Early Detection and Notification System™. Prefense is designed to safeguard the post-surgical patient by providing early detection of arrhythmias and respiratory changes due to analgesics and OSA by monitoring HR, SpO2, Respiration, NIBP. With our unsurpassed quality and reliability, we are able to offer a five-year parts and labor warranty. Combined with our complimentary software upgrades, Nihon Kohden offers the lowest total cost of ownership and greatest value of any monitoring solution provider.



The **OHIO UNIVERSITY**, RN to BSN online nursing degree was designed to fit your busy life! OU offers online classes, 8 start dates per year, 9 nursing classes, each 5 weeks' long, accreditation by CCNE AND HLC, tuition \$243 per credit hour (this is the outside Ohio rate), flexible and affordable payment options, and a budget friendly pay-as-you go program. APPLY NOW: [www.ohio.edu/bsnonline](http://www.ohio.edu/bsnonline). MHA: Fully online, earn your degree in as few as 2 years, part time while you work full time. Instruction is delivered in 12, 3 credit unit courses, each 7 weeks in length (6 semesters to complete). More info: <http://onlinemasters.ohio.edu/masters-health-administration>



Founded in 1891, at Philips Healthcare, we look beyond technology to the experiences of consumers, patients, providers and caregivers across the health continuum – from healthy living and prevention to diagnosis, treatment and home care. We unlock insights leading to innovative solutions that enable better care at lower cost. With leading research, design and innovation capabilities, we partner with our customers to transform the delivery of healthcare.



**Procter & Gamble Baby Care** - For more than 50 years, parents have trusted Pampers® to care for their babies. Pampers products and educational materials are designed in conjunction with nurses to better meet babies' needs for comfort, skin health & protection. For more information on Pampers®, the #1 choice of hospitals, please contact 1.800.543.3331 or [pamperspro.im@pg.com](mailto:pamperspro.im@pg.com).



**ShiftWizrd** makes healthcare staff scheduling & communication easy, so leaders can focus on what really matters—improving patient outcomes. ShiftWizrd's workforce management software was developed by nurses specifically for healthcare organizations. We offer integrations with all major EMR, HR and Time & Attendance systems to enable cost-effective decision making based on real-time Worked Hours per Unit of Service measures such as HPPD and HPPV. ShiftWizrd's clients range from nation-wide enterprise health systems to regional skilled nursing facilities. For questions or interest in learning more, please contact Mike Havelis at [mike.havelis@shiftwizrd.com](mailto:mike.havelis@shiftwizrd.com) or (516) 241-1384



Our complete line of solutions satisfies a broad range of your healthcare facility's needs. We offer innovative technologies for the OR, Hybrid Room, ER, CSSD, ICU, Labor & Delivery departments, exams rooms and much more. Each of our product lines work together to give you exactly what you need: efficiency, versatility, reliability, and cost savings. What's more, each of our products delivers superior performance, allowing you to focus on the patient.



The mission of **Vocera** is to simplify and improve the lives of healthcare professionals and patients, while enabling hospitals to enhance quality of care and operational efficiency. In 2000, when the company was founded, we began to forever change the way care teams communicate. Today, Vocera continues to offer the leading platform for clinical communication and workflow. More than 1,400 hospitals and health systems around the world have selected our solutions to enable care teams to text securely using smartphones or make calls with our hands-free, wearable Vocera Badge. Interoperability between our platform and more than 120 clinical systems helps reduce alarm fatigue and speed up staff response times to improve patient care, safety, and experience, and foster caregiver resiliency. Vocera (NYSE: VCRA) is publicly traded with the resources and fortitude to help ensure your success with our solutions over the long term. In 2017, Vocera made the list of Forbes 100 Most Trustworthy Companies in America. Learn more [www.vocera.com](http://www.vocera.com), and @VoceraComm on Twitter.



Walden University is dedicated to the success of both nurses and healthcare facilities. An accredited institution, Walden has served the education needs of adult learners for more than 45 years. Today Walden offers a range of nursing degree programs, including CCNE-accredited Bachelor of Science in Nursing RN-BSN Completion and Doctor of Nursing Practice (DNP) programs. With relevant coursework and extensive support services, Walden supports nurses looking to advance their education.



Waynesburg University is a private Christian university that offers accelerated graduate programs in business, counseling, criminal investigation, education and nursing. The Nursing programs include RN to BSN, MSN with concentrations in administration, education or informatics and the Doctor of Nursing Practice with an executive leadership focus. With an emphasis on affordability and flexibility, classes are offered online and at four convenient locations in Cranberry, Monroeville, Southpointe and Waynesburg. Waynesburg University also offers cohorts in local area hospitals upon request.



Founded in 1915 and headquartered in Skaneateles Falls, NY, **Welch Allyn** is a leading global manufacturer of medical diagnostic equipment and a complete range of digital and connected solutions. With 2,500 employees working in 26 different countries, Welch Allyn specializes in helping doctors, nurses, and other frontline practitioners across the globe to provide the best patient care by developing innovative products, breakthrough technologies, and cutting-edge solutions that help them see more patients, detect more conditions, and improve more lives. More information about Welch Allyn and its complete line of connected products and solutions may be found at [www.welchallyn.com](http://www.welchallyn.com). Like us on Facebook and follow us on Twitter and LinkedIn.

## Thank You to our Sponsors and Exhibitors

### Gold



At **Allegheny Health Network (AHN)**, we put our patients first. You get the right care at the right time in your neighborhood and throughout western Pennsylvania. And it's personalized according to your needs. Our doctors, nurses, and staff are experts in the latest medical research and technology, but they specialize in compassion. At AHN, we're committed to providing you with the best possible care that's affordable. Our multidisciplinary teams share knowledge and collaborate on your care plan. And we are here when you need us — even if you call the same day or need to come in after hours. You are the Living Proof of why we do what we do. And the difference we can make.



**Stryker's** Medical division develops innovative medical equipment focused on improving outcomes for patients and caregivers. We are focused on safety, prevention, and ease of use - bringing caregivers confidence and delivering proven outcomes. Together with our customers, we are driven to make healthcare better.



**UPMC Center for Nursing Excellence and Innovation (CNEI)** is a corporate function that works to integrate nursing excellence and spread best practices across the UPMC enterprise in order to achieve quality clinical outcomes, increase nursing engagement through shared governance and development of our future leaders. UPMC is a \$10 billion integrated global health enterprise headquartered in Pittsburgh, Pennsylvania, and one of the leading non-profit health systems in the United States. As Pennsylvania's largest employer with 61,000 employees, UPMC is transforming the economy of the region into one based on medicine, research and technology.

### Silver



**California University of Pennsylvania** offers affordable, quality, 100% online education for nurses. Programs include the RN-BSN completion program, MSN in Nursing Administration and Leadership program, NEW MSN-MBA Dual Degree Option, and MBA degree for MSN graduates from programs in nursing administration. Because of the global nature of the program, students can enter the program from local area, the state, regional, national and international locations. The MSN and BSN programs are CCNE accredited and Cal U is ranked in 2016 among the nation's top 10 Most Affordable Colleges for Online Nursing Degrees by SR Education Group. To learn more, please send an email to [calugo@calu.edu](mailto:calugo@calu.edu) or call 1-866-595-6348.



**Capella University** is an accredited online university dedicated to providing exceptional, professionally-aligned education. Healthcare employers, including hundreds of hospitals and clinics, partner with Capella to develop critical talent. Multiple degree programs are available in the ground-breaking, direct assessment, FlexPath learning format and Capella's BSN, MSN, and DNP programs are accredited by the CCNE. Learn how Capella can help you meet your nurse development goals; visit our booth or contact us at: [capellaemployersolutions@capella.edu](mailto:capellaemployersolutions@capella.edu), 1.888.227.3552, or [www.capellaemployersolutions.com](http://www.capellaemployersolutions.com).

