

2017 ANNUAL SWPONL CONFERENCE

# NURSE LEADERS

## MANAGING THE PRESENT, ANTICIPATING THE FUTURE

AUGUST 31 – SEPTEMBER 1, 2017

NEMACOLIN WOODLANDS RESORT



# Final Program

SOUTHWESTERN PENNSYLVANIA ORGANIZATION OF

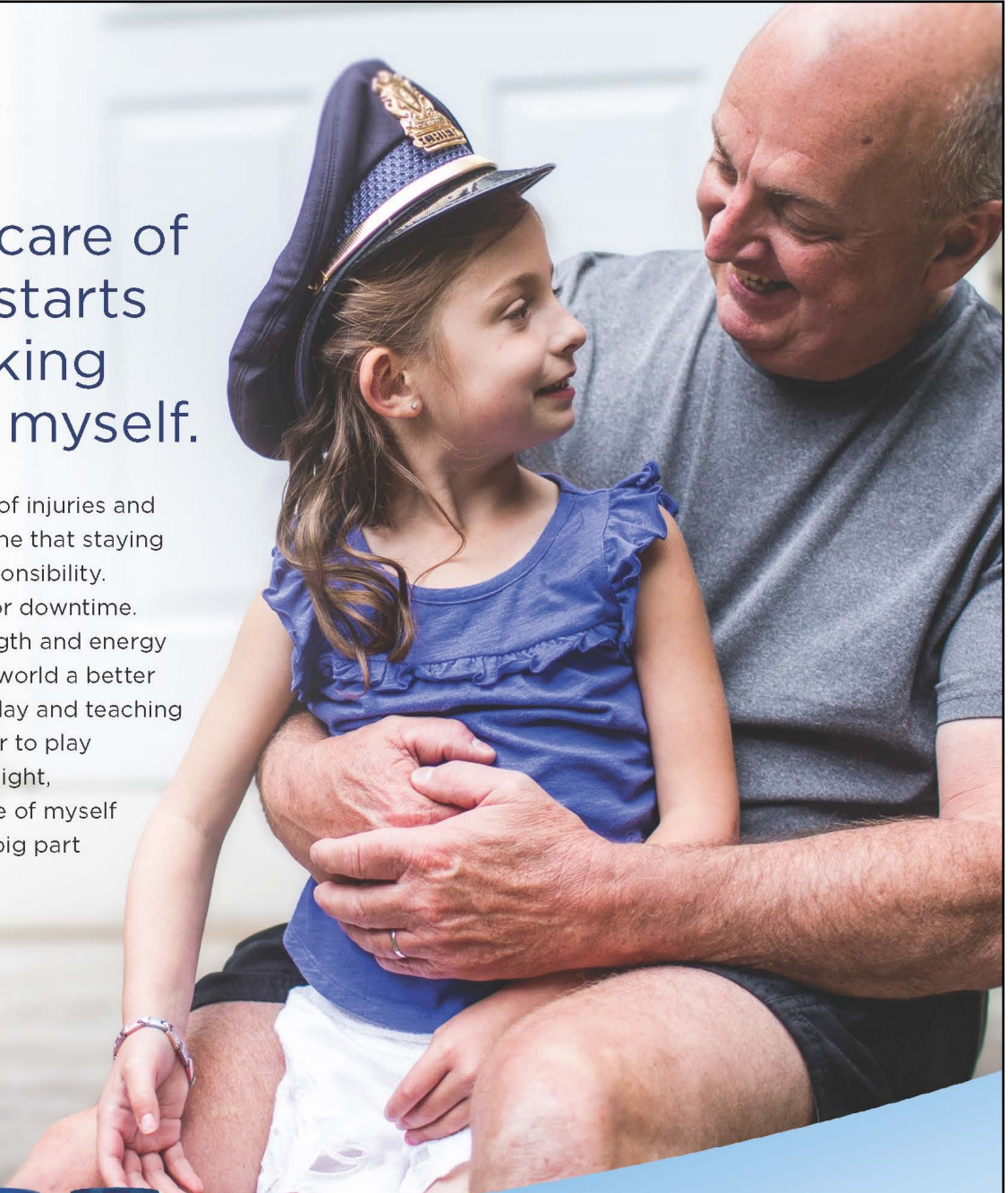
*Nurse Leaders*



# Taking care of others starts with taking care of myself.

Years ago, a host of injuries and surgeries taught me that staying healthy is my responsibility. I've got no time for downtime. If I want the strength and energy to be making the world a better place during the day and teaching my granddaughter to play soccer later that night, I need to take care of myself first. Ensure® is a big part of that plan.

*Bill*



Complete, Balanced Nutrition®

up to  
**16g**  
protein

up to  
**26**  
vitamins + minerals

**Ensure**  
ALWAYS  
BE YOU™

Use as part of a healthy diet and exercise plan. Our Ensure Can Do People were compensated for sharing their stories. ©2017 Abbott Laboratories 171280/July 2017 LITHO IN USA



For the full scoop on Bill, plus more Ensure Can Do People stories, visit [Ensure.com/CanDoStories](http://Ensure.com/CanDoStories)

Dear Colleagues:

I am very excited and honored to welcome you to the 38<sup>th</sup> Annual Southwestern Pennsylvania Organization of Nurse Leaders Education Conference. The theme of this year's conference is "**Nurse Leaders – Managing the Present, Anticipating the Future.**"

Health care is most certainly in a time of transition that is unlike any prior experience. The path to the future model of health care is complex and unclear; however, it is clear there will be change whether nurse leaders take an active role or not. This year's conference is centered on nurse leaders embracing and influencing change. Topics such as developing high performing teams, examining the opioid epidemic, delivering high levels of care now and in the future, as well as, the role of the nurse leader relating to population health will be explored. These topics and the planned speakers will offer inspirational messages and practical ideas for anticipating and embracing the changes and challenges ahead.

Our SWPONL Education Committee is to be commended for another great conference line up. They fulfill the education and networking mission of our organization by planning our networking events and annual conference. We are so grateful for all of their efforts!

In addition to the outstanding speakers, you will also have the opportunity to browse an impressive collection of poster presentations. Once again, we will host a networking event, which has grown in popularity over the past few years. The event offers you the perfect opportunity to meet and network with other nurse leaders from across our region.

Finally, I encourage you to stop by the exhibit hall to be greeted by a wide array of healthcare vendors. Let them know how much you appreciate their contributions to this event.

Thank you for your participation.

Sincerely,



*Diane*

Diane S. Hupp, DNP, RN, NEA-BC  
Chair, SWPONL

### SWPONL Mission

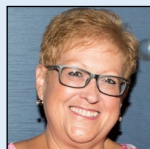
To support the professional development of nurse leaders through collaboration, advocacy and education.

### SWPONL Vision

To position nurse leaders to influence the future of healthcare in Southwestern Pennsylvania.

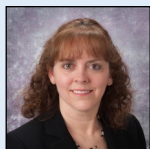
**In Recognition of their Dedication in the Planning of the  
2017 SWPONL Conference**

**Chair**

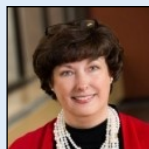


*Deborah Vehec, MSN, RN*  
Manager of Special Programs  
Bone Marrow Donor Coordinator  
ITxM, Central Blood Bank

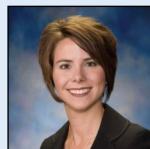
**Education Committee**



*Denise Abernethy, MSN, RN, CEN*  
Clinical Director  
UPMC St. Margaret



*Laura Fennimore, DNP, RN, NEA-BC*  
Professor  
University of Pittsburgh



*Heather Ambrose, DNP, RN, CPON, CPN*  
Director, Organizational Development  
Nursing Education and Research  
Children's Hospital of Pittsburgh



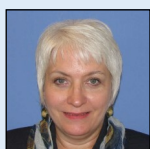
*Lisa A. Manni, MSN, RN, NEA-BC*  
Clinical Director, Critical Care &  
Emergency Services  
UPMC Passavant



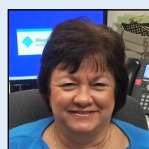
*Diane Cancilla, MSN, RN*  
Unit Director, Radiology Department  
Children's Hospital of Pittsburgh



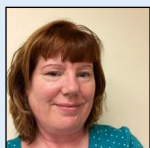
*Robin Myers, MSN, CRNP*  
Director of Nursing Education  
UPMC Mercy



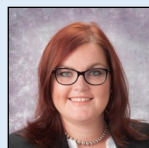
*Regina Davin, RN, MSN*  
Associate Nurse Executive  
Washington Health System



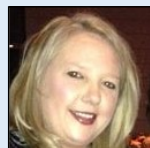
*Evelyn Ozanich, MSN, RN, CCRN*  
Director, Cardiac Transplant, Mechanical  
Circulatory Support Program  
Allegheny General Hospital



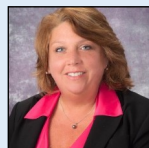
*Louise Dobbins, BSN, MHA, FACHE*  
Director, Hospital Operations  
Allegheny General Hospital



*Aimee L. Skrtich, DNP, RN, CCRN, NE-BC*  
Clinical Program Director, ICU Service Line  
UPMC Mercy



*Jacqueline Drahos, MSN, RN*  
Unit Director  
UPMC Jameson



*Shelley Watters, DNP, RN, NE-BC*  
Director, Cultural Excellence  
UPMC Presbyterian Shadyside

*Linda R. Mason*  
Conference Project Manager  
SWPONL

## Conference Details

### Networking & Poster Reception

Please join us for the **Networking & Poster Reception on Thursday, August 31, from 6:30pm – 8:30pm.** Attendees will have the opportunity to enjoy a light reception with desserts and drinks (one drink ticket will be provided for each attendee.) This is an ideal opportunity to network and catch up with old as well as new acquaintances. The reception is included in the registration and all are welcome! Due to popular request, the poster authors will be available during the reception.

### Posters

The abstracts that were accepted for posters will have their posters displayed throughout the Conference and the authors will be available for discussion during the breaks and at the Poster Reception as noted in the program. The poster presentations offer a time for nurse leaders to network and share ideas about unique practice methods and solutions for a variety of healthcare settings. Poster abstracts were reviewed on the basis of original research, practice, or educational focus for a completed or in progress nursing leadership project or innovative approach.

### Exhibits

Please visit and support our sponsors and exhibitors in the exhibit hall during the conference. The exhibitors and sponsors help to support this important educational activity for SWPONL and provide an opportunity for attendees and companies to interact personally.

### Resort Activities

SWPONL attendees receive a 10% special discount on resort activities. Please make your reservations in advance to take advantage of this offer.

### Contact Hours

SWPONL and the University of Pittsburgh School of Nursing are collaborating to present the 2017 Annual Conference. Participating nurses successfully completing the program requirements may be awarded up to 8.75 contact hours of continuing nursing education.

The University of Pittsburgh School of Nursing is accredited as a provider of continuing nursing education by the American Nurses Credentialing Center Commission on Accreditation (ANCC).

### Evaluations/Continuing Education Credits

The evaluation link will be sent via email after the conclusion of the conference (through Survey Monkey). Evaluations are important to help us to plan and to improve our future programs. **In order to receive your Continuing Education Credits for this conference you must complete the survey by Wednesday, September 6<sup>th</sup>.** If you have any questions, please contact Linda Mason at: [lindam.kme@gmail.com](mailto:lindam.kme@gmail.com).

The contact hour certificate will be sent directly to attendees from the University of Pittsburgh.

### Speaker Handouts/Conference Materials

The speaker's handouts and other conference related materials are available online:

[Conference Handouts](#)

## Thursday, August 31, 2017

7:15AM – 8:30AM **Registration, Continental Breakfast with Exhibitors and Poster Session**

8:30AM – 8:45AM **Opening Remarks / SWPONL Chair Welcome**

*Diane S. Hupp, DNP, RN, NEA-BC*

Chief Nursing Officer

Vice President, Operations and Patient Care Services

Children's Hospital of Pittsburgh of UPMC

Pittsburgh, Pennsylvania



8:45AM – 10:15AM **Keynote Presentation - Using Strengths to Develop High Performing Teams**

*Joyce Batcheller, DNP, RN, NEA-BC, FAAN*

Robert Wood Johnson Executive Nurse Fellow Alumna

Nurse Executive Advisor, Leadership

The Center for the Advancement of Healthcare Professionals

AMN Healthcare

Dallas, Texas



10:15AM – 10:45AM **Refreshment Break / Visit Exhibits, Posters and Raffle**

10:45AM – 11:30AM **Population Health: Implications for Nurse Leaders**

*Marion McGowan, PhD*

Chief Clinical Officer

Senior Vice-President, Population Health

UPMC Insurance Services Division

Pittsburgh, Pennsylvania



11:30AM – 12:30PM **Lunch / Networking**

12:30PM – 1:30PM **The Heroin and Prescription Pain Pill Epidemic**

*Ryan West, MS*

Manager, Corporate Trainings & Business Development

Greenbriar Treatment Center

Pittsburgh, Pennsylvania



1:30PM – 2:00PM **Dessert Break / Visit Exhibits, Posters and Raffle**

2:00PM – 2:45PM **PTSD: A Global and Personal Perspective**

*David Sever, RN, MSN, ACNS-BC*

Diabetic Educator

Shea Medical Center

Pittsburgh, Pennsylvania



(program continues on page 7)

## Thursday, August 31, 2017

2:45PM – 3:30PM **Culturally Competent Healthcare and the LGBT Community**

*Christine L. Bryan*  
Director of Marketing  
Delta Foundation of Pittsburgh  
Pittsburgh, Pennsylvania



*Stacy Lane, DO*  
Founder/Physician  
Central Outreach Wellness Center  
Pittsburgh, Pennsylvania



*Gary A. Van Horn, Jr.*  
President  
Delta Foundation of Pittsburgh  
Pittsburgh, Pennsylvania



3:30PM – 6:30PM **Free Time to Enjoy the Resort**

6:30PM – 8:30PM **Networking and Poster Reception**

## Thank You to the 2017 SWPONL Officers & Board of Directors



**Chair**  
*Diane Hupp, DNP, RN, NEA-BC*  
Children's Hospital of Pittsburgh of UPMC



**Past Chair**  
*Marge Dicuccio, BSN, MSN*  
Allegheny General Hospital



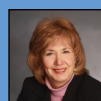
**Chair Elect**  
*Claire Zangerle, MSN, MBA, RN*  
Allegheny Health Network



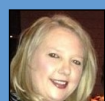
**Secretary/Treasurer**  
*Cynthia Valenta, MSN, RN, CNRN*  
Jefferson Hospital, Allegheny Health Network



**At-Large Board Member**  
*Denise Abernethy, MSN, RN, CEN*  
UPMC St. Margaret



**At-Large Board Member**  
*Mary Lou Murt, BSN*  
Monongahela Valley Hospital



**At-Large Board Member**  
*Jacqueline Drahos, MSN, RN*  
UPMC Jameson



**At-Large Board Member**  
*Robin Myers, MSN, CRNP*  
UPMC Mercy



**At-Large Board Member**  
*Louise Dobbins, BSN, MHA, FACHE*  
Allegheny General Hospital



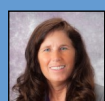
**At-Large Board Member**  
*Deborah Vehec, MSN, RN*  
Central Blood Bank



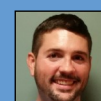
**At-Large Board Member**  
*Amber Egyud, DNP, RN*  
Forbes Hospital, Allegheny Health Network



**Emerging Leader**  
*Michael Simon, RN*  
Allegheny General Hospital



**At-Large Board Member**  
*Jill Larkin, RN, MSN, MBA, DNP, CMQ/OE*  
UPMC, Center of Nursing Excellence



**Emerging Leader**  
*Joseph Barkovich, BA, MSN, RN*

## **Friday, September 1, 2017**

7:00AM – 8:00AM **Registration, Continental Breakfast with Exhibitors and Poster Session**

7:30AM – 8:00AM **SWPONL Updates and Passing of the Gavel**

*Diane S. Hupp, DNP, RN, NEA-BC*

Chief Nursing Officer

Vice President, Operations and Patient Care Services

Children's Hospital of Pittsburgh of UPMC

Pittsburgh, Pennsylvania



8:00AM – 9:00AM **Keynote Presentation - Action Oriented Learning as an Innovative Strategy to Deliver High-Value Nursing Care**

*Kate O'Neill, DNP, RN*

Sr. Advisor Practice, Education and Innovation

iCareQuality.US

Philadelphia, Pennsylvania



9:00AM – 10:00AM **Building Future Leaders**

*Tina Graziotto*

Master Trainer & Executive Coach

Dale Carnegie Training

Pittsburgh, Pennsylvania



10:00AM – 10:30AM **Refreshment Break / Visit Exhibits, Posters and Raffle**

10:30AM – 11:30AM **Stepping Up to the Plate: Creating the Future of Nursing Through Advocacy and Board Work**

*Laura Fennimore, DNP, RN, NEA-BC*

Professor

University of Pittsburgh

Pittsburgh, Pennsylvania



11:30AM – 12:30PM **Closing Keynote - Identifying and Responding to Employee Impairment in the Workplace**

*Ryan West, MS*

Manager, Corporate Trainings & Business Development

Greenbriar Treatment Center

Pittsburgh, Pennsylvania



12:30PM – 12:45PM **Announcement of Poster Award Winners, Gift Baskets and Raffle**

12:45PM – 1:00PM **Closing Remarks and Conference Adjourns**



## Sponsors and Exhibitors

Please visit and support our sponsors and exhibitors during the conference. Their support is instrumental in having a successful conference and provides an opportunity for attendees and companies to interact personally. **Play Vendor Bingo** for an opportunity to win 2 nights stay at the Nemacolin Woodlands Resort! Visit at least 10 vendor booths, receive their bingo stamp (10 total), fill in your contact information and return your completed card to the registration desk. Good luck!

### Premium



**Health Care Solutions USA** is a Pittsburgh based manufacturer's representative with over twenty-five years of healthcare equipment experience. Currently representing HoverTech International, the world leader in air assisted patient re-positioning HoverMatts, for turning, boosting, and lateral transfers. And the HoverJack, for picking a fallen patient up off the floor with no manual lifting. Also offering Lifts, Sit-to-Stands, and Slings through ProCare Medical to meet all your Safe Patient Handling needs. Free Risk Assessments available.



**Hill-Rom** is a leading global medical technology company with 10,000 employees worldwide. We partner with health care providers in more than 100 countries by focusing on patient care solutions that improve clinical and economic outcomes in five core areas: Advancing Mobility, Wound Care and Prevention, Clinical Workflow, Surgical Safety and Efficiency and Respiratory Health. Around the world, Hill-Rom's people, products, and programs work towards one mission: Every day, around the world, we enhance outcomes for patients and their caregivers. Visit [www.hill-rom.com](http://www.hill-rom.com) for more information.



**LifeCare Hospitals of Pittsburgh** specializes in maximizing the recovery potential of acutely ill or injured patients. We provide a unique level of care for any patient whose clinical needs will benefit from extended inpatient hospitalization or specialized care. We help minimize the likelihood of hospitals readmissions for patients who may not be ready to return home or to a skilled nursing facility. Our care teams specialize in treating: acute respiratory disease, complex wounds, traumatic brain injury, renal failure, congestive heart failure, infections requiring antibiotic therapy, complications following surgical procedures and other conditions requiring expert care. We have four hospitals throughout Southwestern PA, as well as a TCC and Behavioral Health Hospital.



Founded in 1990, **LINET** is an international leader in healthcare technology with patient beds installed in over 100 countries. Considered one of the most dynamic companies in the healthcare field, LINET offers a new and unique approach to the hospital bed market. LINET manufactures innovative beds for the ICU and Medical-Surgical environments that promote patient and nurse safety, facilitate early mobilization, assist in better adherence to turning schedules, improve pain management and help reduce infection rates. All of our products also come with an unprecedented 5-year warranty. The company's U.S. headquarters is based in Charlotte, NC. Please visit [www.linetamericas.com](http://www.linetamericas.com) for more information.



As a global leader in medical technology, services and solutions, **Medtronic** improves the lives and health of millions of people each year. We use our deep clinical, therapeutic and economic expertise to address the complex challenges faced by healthcare systems today. Let's take healthcare Further, Together. Learn more at [Medtronic.com](http://Medtronic.com).



**Nihon Kohden** offers unrivaled monitoring technology that works across the healthcare continuum. We will highlight clinical benefits of implementing a Defensive Monitoring strategy with our Prefense™ Early Detection and Notification System™. Prefense is designed to safeguard the post-surgical patient by providing early detection of arrhythmias and respiratory changes due to analgesics and OSA by monitoring HR, SpO2, Respiration, NIBP. With our unsurpassed quality and reliability, we offer a five-year parts and labor warranty. Combined with our complimentary software upgrades, Nihon Kohden offers the lowest total cost of ownership and greatest value of any monitoring solution provider.



**Sizewise** sets the standard in service, safety, and savings by offering a full line of products and solutions designed to minimize caregiver injuries, reduce patient falls, and prevent pressure ulcer development. Sizewise equipment is manufactured in the USA and globally distributed in acute care, long-term care, and home care markets. [www.sizewise.com](http://www.sizewise.com) | 800-814-9389



**Wieland** is devoted to the patient and caregiver alike, innovatively addressing solutions for infection control, family needs, and improved patient outcomes. Moisture barrier and renewability are standard. Sleep sofas, recliners, gliders and lounge chairs are among our patient room and lobby offering.

## Exhibitors



**AccuVein**, the leader in vein visualization, helps practitioners locate veins for venous access procedures such as IV starts and blood draws by providing a map of the patient's vasculature on the skin's surface. Simply point the lightweight, portable device at the skin and click to display the peripheral veins beneath.



**Applied Medical Technology, Inc. (AMT)** is a global leader and manufacturer of **Enteral Feeding Devices, Accessories & Surgical Line**. Our products: MiniONE® low-profile Balloon, Non-Balloon, and Capsule Non-Balloon buttons, the G-JET® low-profile gastric-jejunal enteral tube, and the Bridle™ *Nasal Tube Retaining System*. **Surgical Line: Remora™** Smoke&Fluid Tube Evacuator, **TLC®** Self-Retaining Retractor Systems, and **Wilson™** Self-Retaining Retractor Systems for Male Urologic Surgery. All AMT products are proudly made in the USA! Innovating. Educating. Changing Lives.



**Advanced Solutions** - Hospitals are always looking for ways to increase their scores on patient exit surveys. ASCC provides the Tri-State Healthcare Community with customized solutions that progress around the constant transformation of technologies: Automation to streamline workflow processes and promote staff efficiencies; and quick, direct, content-rich communications to increase patient satisfaction. Let us provide you with an intuitive solution that will free you to do what you do best – provide superior patient care. Contact: Mark Bodo, Vince Bianco or Michelle Pekich at 724-772-2722 [www.ascinc.com](http://www.ascinc.com).



**Bard Access Systems (BAS)**, a division of C.R. Bard, is a market leader in the design and development of innovative vascular access devices, catheter care products and portable imaging products. Bard's extensive product offering is further enhanced by comprehensive clinical, educational and operational programs designed to help customers address specific challenges within their institutions and enhance patient care.



BD is a global medical technology company that is *advancing the world of health* by improving medical discovery, diagnostics and the delivery of care. The company provides innovative solutions that help advance medical research and genomics, enhance the diagnosis of infectious disease and cancer, improve medication management, promote infection prevention, equip surgical and interventional procedures, and support the management of diabetes. BD has nearly 50,000 associates across 50 countries who work with customers and partners to help enhance outcomes, lower health care delivery costs, increase efficiencies, improve health care safety and expand access to health. [bd.com](http://bd.com).



**Centurion** develops products designed to improve outcomes. Offering Dressing Change Trays, IV Securement Kits and PIV Bundles, including SorbaView SHIELD® securement dressings. Featuring the CVC Zone Bundle – a central line bundle with everything needed to help prevent CLABSIs. Introducing the innovative Compass™ products that quickly and easily measure physiological pressure.



*Bringing you Medical Technology for Tomorrow* - **Clinical Technology Inc. (CTI)** is a leading specialty distributor of medical products in the mid-western region of the U.S. Current owner, Dennis Forchione founded CTI in 1978. CTI specializes in service and support for all your practice needs. We continue to research the market to identify and supply you with the latest products and services for each of the following specialties: 1. Interventional Radiology and General Surgery, 2. Nursing and I.V. Therapy and 3. Interventional Pain and Anesthesia.



**Dale** products are designed to help the healing process, reduce skin irritation and save nursing time. Manufactured to rigorous standards, Dale products contain only the highest quality materials ensuring unparalleled durability and optimal patient comfort. Visit us at: [www.dalemed.com](http://www.dalemed.com).



**Duquesne University School of Nursing**, located in Pittsburgh Pennsylvania is an acknowledged leader in nursing education. Our growing programs offer curriculums that embrace technology, ethics, scholarship, research, and community engagement. Our undergraduate programs include: A traditional 4 year program, Second Degree program, Biomedical Engineering/BSN Dual degree program, and an online RN-BSN program. Our online graduate programs include: MSN programs with 3 focuses (Forensics, Education and Faculty Role, and Family [Individual Across the Lifespan] Nurse Practitioner), Post-Master's Certificates, DNP, PhD programs in Nursing and Nursing Ethics. Our graduates and faculty are making a difference as nurses, educators, scholars, practitioners and researchers.



Founded more than 35 years ago, **Genentech** is a leading biotechnology company that discovers, develops, and manufactures and commercializes medicines to treat patients with serious or life-threatening medical conditions. The company, a member of the Roche Group, has headquarters in South San Francisco, CA. <http://www.gene.com/>,



Founded in 1949, **Grand Canyon University** is a private, Christian university with more than 160 academic programs and more than 100 bachelor's, master's and doctoral online degrees within a dynamic learning environment for both traditional students and working professionals. Our classes involve engaging interaction with classmates and individual attention from faculty who care about student success.



**La Roche College** is a private, Catholic, co-educational college and welcomes students of all religions, ethnic origins and talents. Choose from more than 50 undergraduate majors including the RN-BSN completion degree. Additionally, there are several graduate programs, including the Master of Science in Nursing (MSN) program which builds on the knowledge and competencies of baccalaureate education. Three tracks are offered for the MSN: Nursing Administration, Nursing Education, and Clinical Nurse Leader. Both the bachelor of science degree program for registered nurses and the MSN are accredited by the Accreditation Commission for Education in Nursing. Please visit [www.laroche.edu](http://www.laroche.edu) for more information.

## Exhibitors (continued)



With BSN-prepared nurses in demand more than ever before, **La Salle University's** evidence-based curriculum—with a focus on quality and safety—and dedicated faculty prepare graduates to become leaders in patient care. Combining the convenience of an online program with a student-centered approach, the 100% online RN to BSN program at La Salle University invites nurses to explore dynamic new career opportunities. Learn more at <http://online.lasalle.edu/mary>.



**Mallinckrodt Pharmaceuticals** is an industry leader in providing specialty biopharmaceutical products used in treatment of autoimmune and rare disease specialty areas, respiratory therapy, pain and related conditions, and diagnostic procedures. The company's Specialty Brands segment includes branded medicines; its Specialty Generics segment includes specialty generic drugs, active pharmaceutical ingredients and external manufacturing; and the Global Medical Imaging segment includes contrast media and nuclear imaging agents. Visit [www.mallinckrodt.com](http://www.mallinckrodt.com) to learn more.



**Mölnlycke** is a world-leading medical solutions company. Our purpose is to advance performance in healthcare across the world, and we aspire to equip everybody in healthcare with solutions to achieve the best outcomes. [www.molnlycke.com](http://www.molnlycke.com)



**NeuroOptics®** - Pupillometry: Accurate...Trendable...EMR-Ready. NeuroOpticsNPI® -200 Pupillometer System provides trendable, accurate, and objective measurement of pupil size and reactivity in the neurocritical care patient. The NPI-200 is EMR-ready, saving valuable nursing time, eliminating potential charting errors and providing an important clinical assessment tool to remove subjectivity from the pupillary evaluation.



The **Ohio University**, RN to BSN online nursing degree was designed to fit your busy life! Online classes; 8 starts dates/year; 9 Nursing classes, each 5 weeks long; Accredited by CCNE and HLC; Tuition \$243 per credit hour (outside of Ohio rate); Flexible and affordable payment options; Budget friendly pay-as-you-go program. Apply now: [www.ohio.edu/bsnonline](http://www.ohio.edu/bsnonline). MHA: Fully online, earn your degree in as few as 2 years, part time while you work full time. Instruction is delivered in 12, 3 credit unit courses, each 7 weeks in length (6 semesters to complete). More info: <http://onlinemasters.ohio.edu/masters-health-administration>



*Keeping Patients Safe and Secure for More than 75 years.* At **Posey**, we are the patient safety experts, leading the industry in falls management products and services. We focus on minimizing hospital falls and related injuries through our innovative technologies and high-quality products.



**Procter & Gamble Baby Care** - For more than 50 years, parents have trusted Pampers® to care for their babies. Pampers products and educational materials are designed in conjunction with nurses to better meet babies' needs for comfort, skin health & protection. For more information on Pampers®, the #1 choice of hospitals, please contact 1.800.543.3331 or [pamperspro.im@pg.com](mailto:pamperspro.im@pg.com).



**University of Pittsburgh School of Nursing** - This nationally-ranked School is known to graduate highly competent nurse leaders. Two ONLINE Leadership Options are available: (1) Health Systems Executive Leadership (HSEL) DNP (customized curriculum for executive (CEO/CNO) leadership in complex healthcare systems, and (2) Clinical Nurse Leader MSN (bridge to HSEL DNP). Additional ONLINE OPTIONS: RN-BSN, RN-MSN (Nursing Informatics), and Post-Master's DNP (master's degree in same focus). ([www.nursing.pitt.edu](http://www.nursing.pitt.edu) / 1-888-747-0794).



**Vocera Communications, Inc.** (NYSE:VCRA) is the leading healthcare communications company providing enterprise-class solutions. Installed in more than 1,300 organizations worldwide, Vocera delivers secure, integrated and intelligent communication solutions that enable care teams to collaborate more efficiently by delivering the right information to the right person, on the right device, in the right location, at the right time. Vocera solutions provide hands-free voice communication, secure text messaging, patient engagement tools, and integrated clinical workflow with EHRs, nurse call systems and physiological monitors. In addition, Vocera drives thought leadership and new standards in care to elevate patient, family, nurse and physician experiences via the company's research collaborative, the Experience Innovation Network. Vocera is headquartered in San Jose, California. For more information, visit [www.vocera.com](http://www.vocera.com) and @VoceraComm on Twitter.



Founded in 1849 by the Cumberland Presbyterian Church, **Waynesburg University** is located on a traditional campus in the hills of southwestern Pennsylvania, with three graduate and professional studies locations in the East, North, and South regions of Pittsburgh. The nursing programs include RN to BSN, MSN with concentrations in administration, education or informatics, and the Doctor of Nursing Practice with an executive leadership focus. Waynesburg University also offers cohorts in local area hospitals upon request.



Founded in 1915 and headquartered in Skaneateles Falls, NY, **Welch Allyn** is a leading global manufacturer of medical diagnostic equipment and a complete range of digital and connected solutions. With 2,500 employees working in 26 different countries, Welch Allyn specializes in helping doctors, nurses, and other frontline practitioners across the globe to provide the best patient care by developing innovative products, breakthrough technologies, and cutting-edge solutions that help them see more patients, detect more conditions, and improve more lives. More information about Welch Allyn and its complete line of connected products and solutions may be found at [www.welchallyn.com](http://www.welchallyn.com). Like us on Facebook and follow us on Twitter and LinkedIn.

## Gold



**UPMC Center for Nursing Excellence and Innovation (CNEI)** is a corporate function that works to integrate nursing excellence and spread best practices across the UPMC enterprise in order to achieve quality clinical outcomes, increase nursing engagement through shared governance and development of our future leaders. UPMC is a \$10 billion integrated global health enterprise headquartered in Pittsburgh, Pennsylvania, and one of the leading non-profit health systems in the United States. As Pennsylvania's largest employer with 61,000 employees, UPMC is transforming the economy of the region into one based on medicine, research and technology.

## Silver



**Abbott Nutrition** is one of the world's leading authorities in science-based nutrition for all stages of life. As your nutrition partner, we invite you to explore our portfolio of products, including Similac, Ensure, Glucerna, Pedialyte and Zone Perfect, to help your patients grow and achieve greater well being. Visit [www.AbbottNutrition.com](http://www.AbbottNutrition.com) to find additional product information, patient education materials, clinical research papers and more.



**Allegheny Health Network** has received numerous national, regional, and local accolades for superior outcomes, quality care, and positive impacts on the communities we serve. As one of the largest healthcare systems serving Western PA, many of our hospitals are ranked #1 in the market for delivering the highest quality of care in several clinical categories according to the Quantros' CareChex® 2017 Hospital Quality Ratings. We believe it's a reflection of our commitment to providing Health For All, and our dedication to delivering high quality care to our patients each and every day. That's the real Living Proof of the difference we hope to make in the lives of our patients, and in our community overall. Because in the end, while it's wonderful to be recognized for our quality of care, what we truly celebrate are the outcomes – the Living Proof that each day, across our seven hospitals and hundreds of care facilities, the physicians, nurses and staff of Allegheny Health Network are providing patients with exceptional care.



**California University of Pennsylvania** offers affordable, quality, 100% online education for nurses. Programs include the RN-BSN completion program, MSN in Nursing Administration and Leadership program, NEW MSN-MBA Dual Degree Option, and MBA degree for MSN graduates from programs in nursing administration. Because of the global nature of the program, students can enter the program from local area, the state, regional, national and international locations. The MSN and BSN programs are CCNE accredited and Cal U is ranked in 2016 among the nation's top 10 Most Affordable Colleges for Online Nursing Degrees by SR Education Group. To learn more, please send an email to [calugo@calu.edu](mailto:calugo@calu.edu) or call 1-866-595-6348.

